



# COLPAI Project: Progress Of Works

---

Online Public Webinar

Thursday 24 November 2022, 7pm

# Webinar Protocol



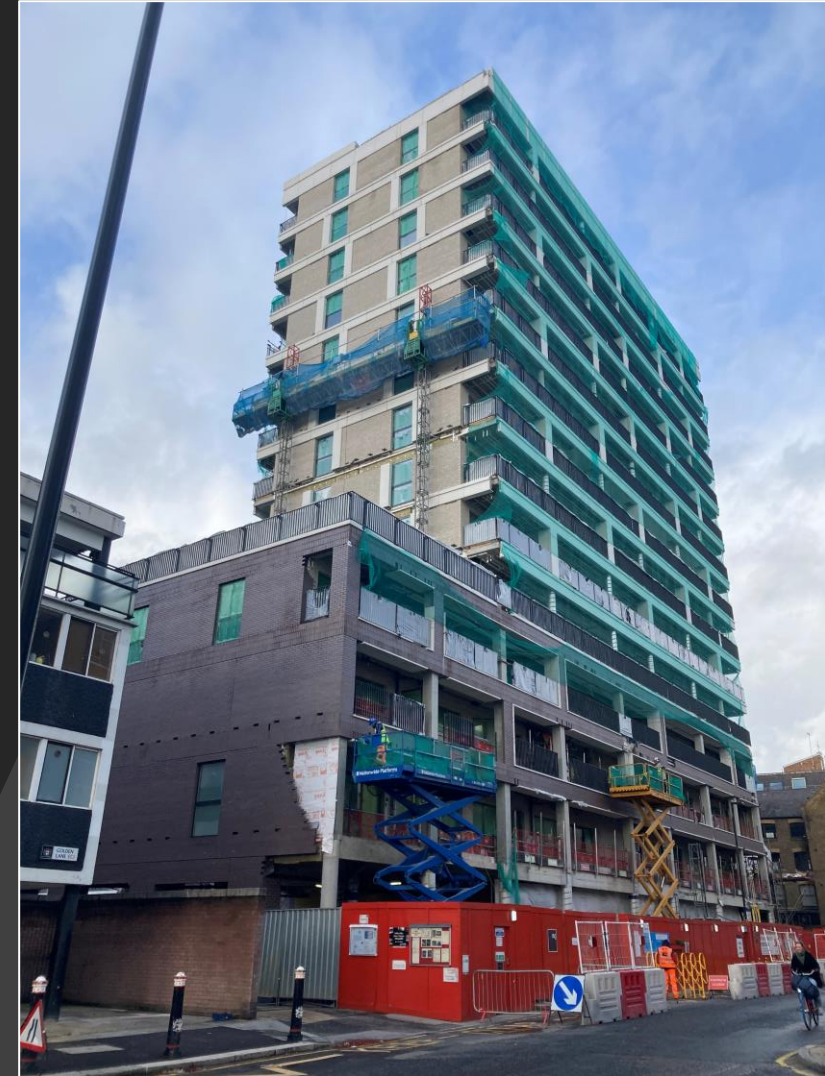
ISG

- The project team is available to discuss and answer questions regarding progress with the works on-site only
- This meeting is not designed or intended to be solely a forum for debating planning related matters, which should be raised with the appropriate planning officers
- We request participants be respectful to all attendees so the webinar runs smoothly.

# Residential Building: External Elevations



North elevation



South elevation



# Residential Building: External Elevations



East elevation



West elevation



# Residential Building: External Areas



Walkway soffit installation



Balcony / walkway soffit  
bracketry ongoing



# Residential Building: External Areas



Balustrade & GRC installation

# Residential Building: Internals – Sample Home



**Kitchen**



**Disabled  
Accessible  
Bathroom**



**Bathroom**



# Residential Building: Internal – General Progress



Duplex staircase



Duplex kitchen



Duplex WC



Duplex hallway



# Residential Building: Internal – Basement



Boiler room



Cycle store preparation



# Residential Building: Significant Upcoming Works



Scaffold removal and MEWP  
brickwork installation



External landscaping area / storage area



External landscaping area / tree pit



# Working Hours And COVID-19 Guidance

## Working hours

### **Monday to Friday**

- 8am - 6pm

### **Saturday**

- 9am - 2pm

### **Christmas Shutdown**

- Close midday 23 December 2022
- Open Tuesday 3 January 2023
- Emergency contact details for the shutdown period will be posted on the COLPAI website

## HSE guidelines and support

<https://www.hse.gov.uk/coronavirus/working-safely/index.htm>

## Government guidelines

<https://www.gov.uk/coronavirus>

# Project Timeline



**Projected Completion:** March 2023

## **Projected Key Milestones:**

- Commissioning of all internal apartments in November 2022
- Christmas shutdown
- Removal of scaffold fans, mast climbers and cradles in January 2023
- Commencement of final phase landscaping in January 2023.



# Name Our New Residential Building



- **Black Raven Court** (named after the historic Black Raven Court, formerly located in the area)
- **Nina Bawden Court** (Nina Bawden, who lived between 1925 – 2012, was a novelist and children's book writer who resided in Islington for the last 35 years of her life and used her experiences in Islington to draw inspiration for her writing)
- **Green Cat Court** (this was a light-hearted and playful suggestion from a Golden Lane Estate resident.)

Vote by visiting our website: [www.colpai-project.co.uk](http://www.colpai-project.co.uk) or call 0800 772 045.

Please call or email [info@colpai-project.co.uk](mailto:info@colpai-project.co.uk) if you have any questions.

You can vote up until **30 November 2022**.

# Q&A