

COLPAI Project Newsletter

www.colpai-project.co.uk



Dear Neighbour

We are writing to you to update you on the progress on-site at the COLPAI Project.

We have been progressing well with works starting on the external scaffolding to the school building and steel erection to the school hall. The school buildings will be scaffolded and elevations will be sheeted by the end of September 2020. This sheeting is used to shield the building and help to contain airborne dust.

We are also undertaking the basement dig to the residential building, continuing with ground works and drainage as well as brick cladding and installation of drywall. On the back of this newsletter, you can find some imagery of the progress on-site.

The works at the COLPAI Project are continuing in strict accordance with guidelines issued by the Government and Public Health England relating to COVID-19. The situation surrounding COVID-19 is ever-changing. Our team is consistently monitoring and following Government guidance and Public Health England advice.

We thank you for your continued cooperation during this time.

Best wishes

COLPAI Project Team

WORKING HOURS

The consented working hours are:

Monday to Friday
8am to 6pm

Saturday
9am to 2pm

The consented reduced impact hours are:

Monday to Friday
10am to 12pm
and 2pm to 4pm

KEY CONTACTS

For site emergencies, please contact:

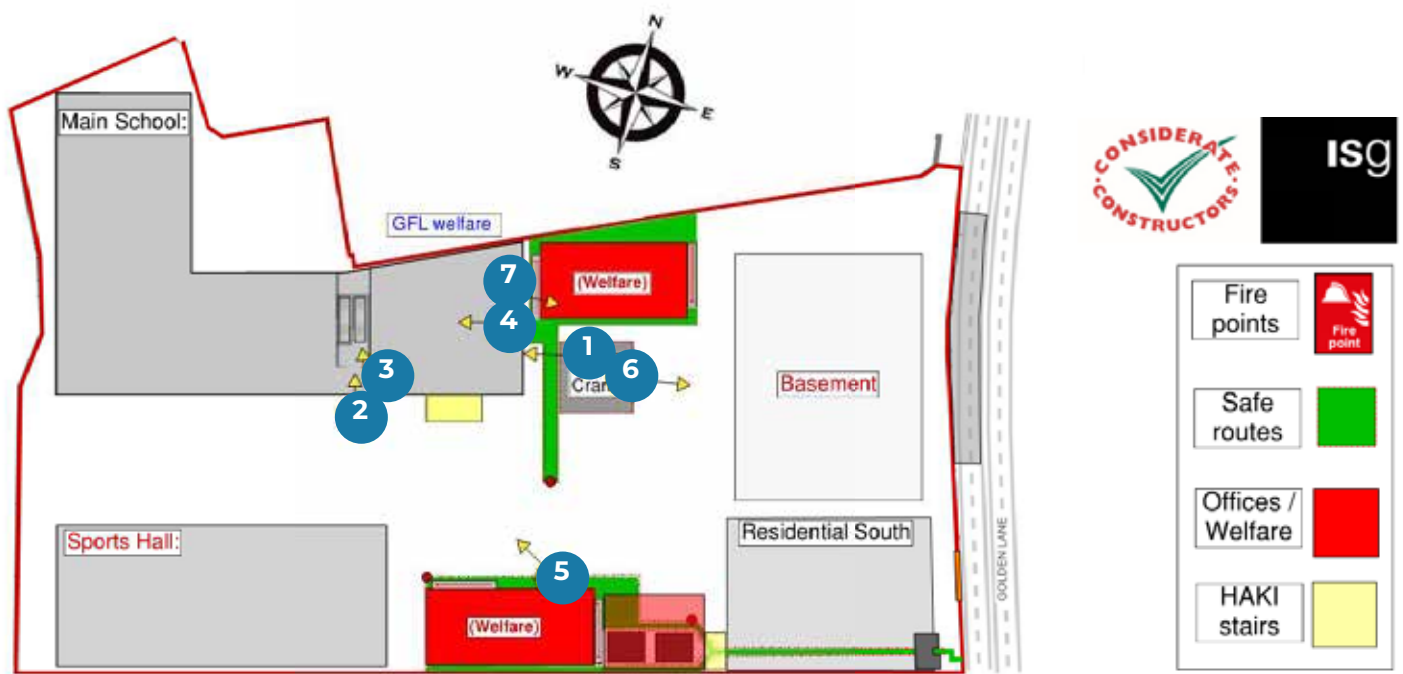
Steven McCarthy, ISG
T: 07825 719 496

For general enquiries, please contact the project team:

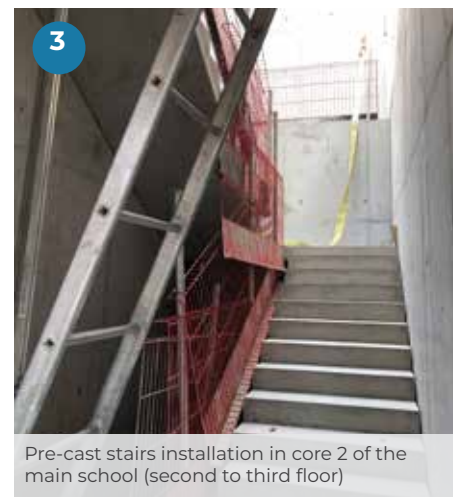
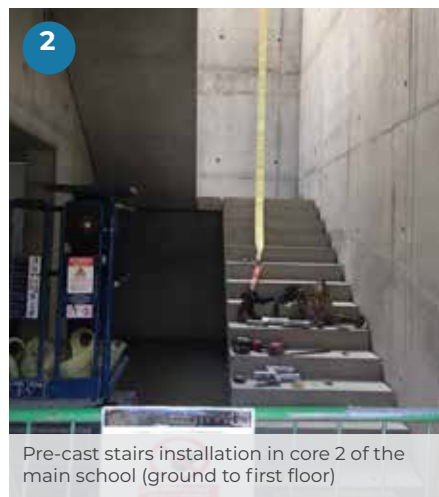
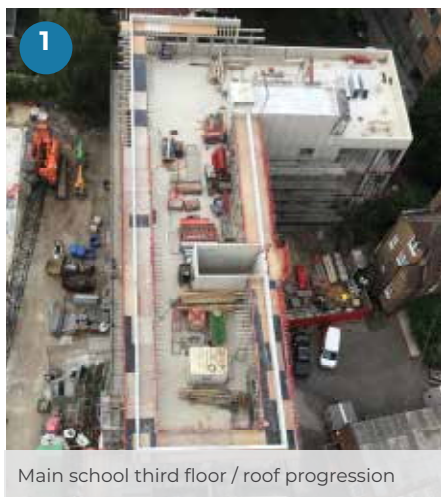
E: info@colpai-project.co.uk
T: 0800 772 0475

For the Department of Community and Children's Services (DCCS), please contact:

Paul Murtagh
T: 0207 332 3015



Map showing the COLPAI Project site in red within the key areas highlighted.



ISLINGTON
In partnership with

