

COLPAI Project Drop-In: WELCOME



The City of London Corporation is redeveloping the former Richard Cloudesley School site to provide a new school, the City of London Primary Academy Islington (COLPAI), with space for 420 pupils and 38 nursery spaces. In addition, the redevelopment will provide 66 new homes for social rent.

Welcome to our COLPAI Project Drop-in Event.

We are here today to:

- 1 Share information about the works
- 2 Share more information regarding recent on-site activities
- 3 Answer any queries you may have.

The COLPAI Project Team, which includes the City of London and ISG, our appointed contractor, is here to discuss the information presented here today and answer any questions.

KEY CONTACTS

For site emergencies, please contact:

Steven McCarthy, ISG
T: 07825 719 496

Stephen Beattie, ISG
T: 07816 418 156

For general enquiries, please contact the project team:

E: info@colpai-project.co.uk

T: 0800 772 0475

W: www.colpai-project.co.uk

For the Department of Community and Children's Services (DCCS), please contact:

Paul Murtagh
T: 0207 332 3015

About ISG

ISG is a member of the Considerate Constructor's Scheme (CCS). As such, ISG's performance on this site will be monitored by the CCS against its own Code of Considerate Practice, which is designed to encourage best practice in construction.

ISG is fully committed to the principles of Corporate Social Responsibility and is keen to ensure that its impact on the environment and the local community is a positive one that is addressed thoughtfully for the duration of this project.

ISG has a number of graduates and apprentices working on this project and is committed to offering more local apprenticeships and work experience placements. If you know of anyone who may be interested in these opportunities, please do contact the team at ISG.



www.colpai-project.co.uk

 **ISLINGTON**
In partnership with



COLPAI Project Drop-In: MONITORING DATA

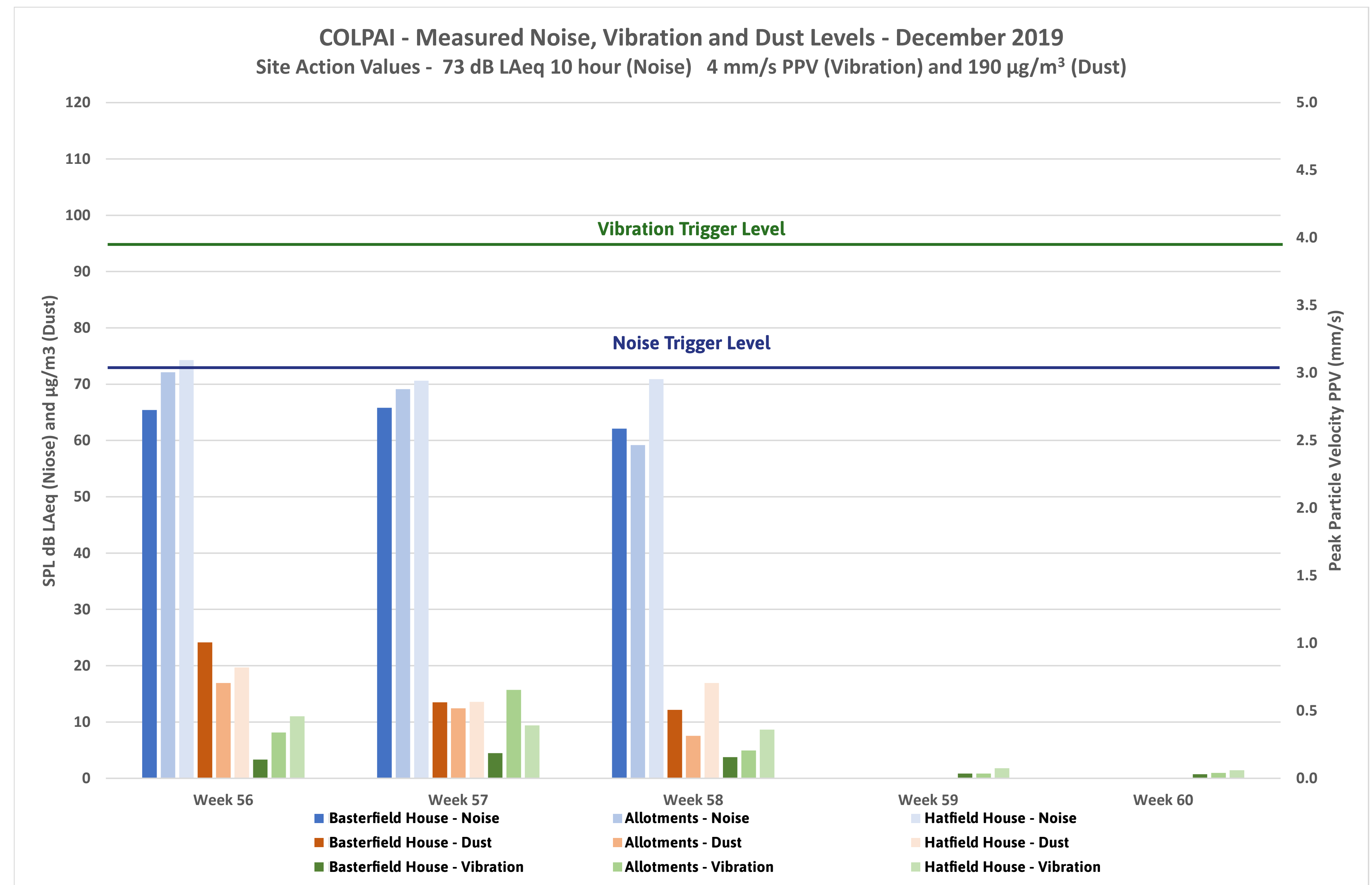


Dust, noise and vibration are being monitored on-site at three points along the hoarding. Three environmental monitors are installed directly around the site, with a further two monitors installed on Basterfield House and Hatfield House.

The monitors are set within acceptable tolerance levels and we endeavour at all times to keep within the dust, noise and vibration control limits expected by the City of London and the London Borough of Islington. If any of the control limits are exceeded, the monitors will alert the site team so that early remedial action can be taken.

To date, the maximum vibration level recorded internally at Basterfield House was 0.8mm/s, which is considerably below the trigger level of 4mm/s.

Noise and dust levels remain within established limits. The on-site team will continue to monitor these results and make the monitoring data available on our noticeboard on the site hoardings.



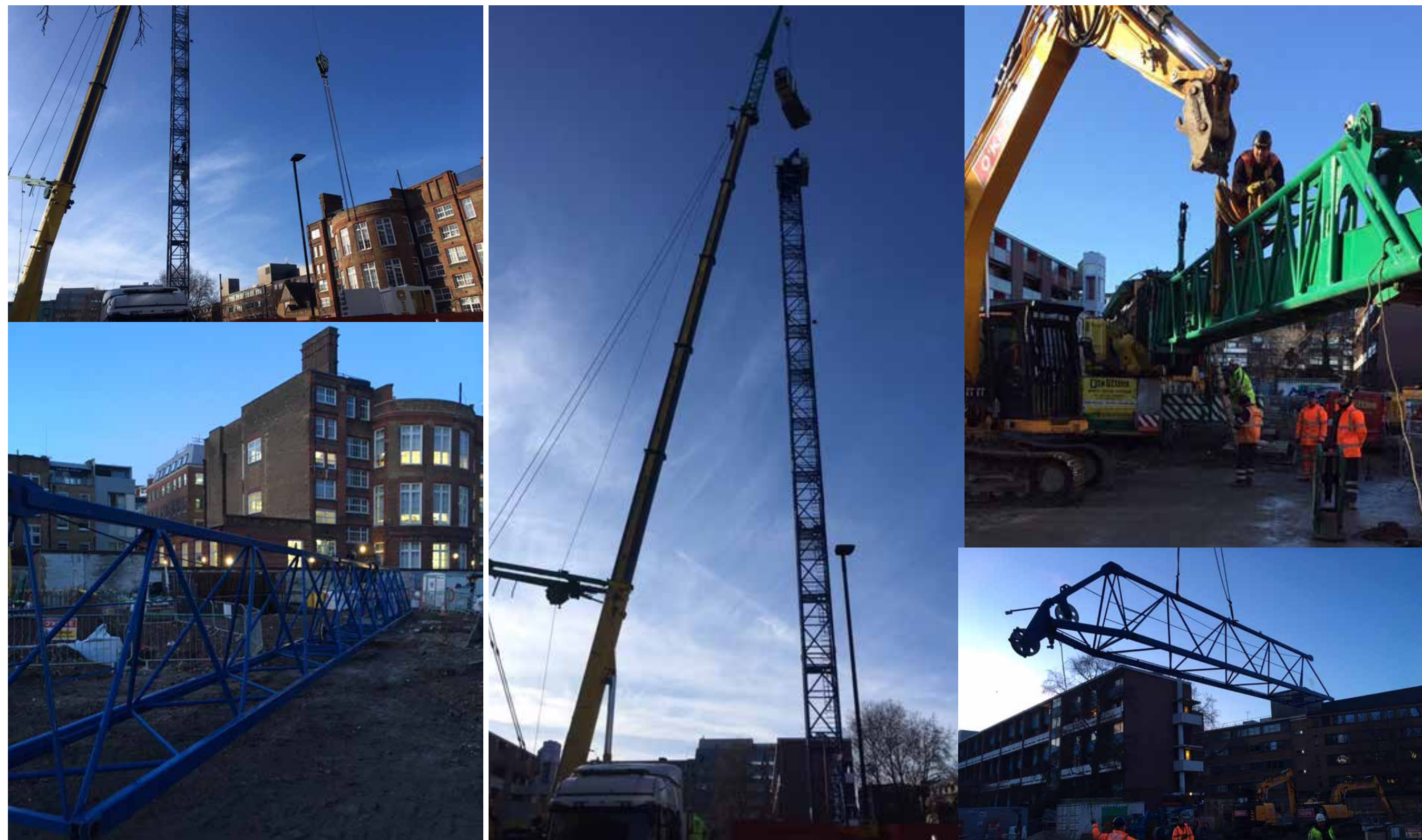
COLPAI Project Drop-In: TOWER CRANE WORKS

Tower Crane

As you will be aware, it was necessary to carry out extended weekend works on Saturday 11 January and Sunday 12 January to enable the delivery and erection of the tower crane on the COLPAI Project site.

Residents were informed of these works at the November 2019 Drop-In event and in the November newsletter.

Unfortunately, due to unexpected high winds on **Saturday 11 January and Sunday 12 January**, the erection of the tower crane could not be completed. Arrangements were subsequently made to complete the works on **Saturday 18 and Sunday 19 January**. Residents were informed of this matter by email and website updates.



Images of the installation works for the COLPAI Project tower crane

COLPAI Project

Weather Conditions

The governing regulation that controls the installation and operation of a tower crane is the 'Lifting Operations and Lifting Equipment Regulations 1998'. The regulation notes that:

'The use of lifting equipment in the open air should be halted where the weather (meteorological condition) deteriorates to the point that it could affect the integrity of the lifting equipment or expose people to risks.'

Alongside this regulation, the operation manual for the crane stipulates a wind speed above 22 miles per hour as unsuitable for crane operations to continue.

Due to this, works to install the crane were suspended on Saturday 11 January and Sunday 12 January.

Tower Crane FAQ

Will the crane oversail the residential buildings on Golden Lane Estate?

No, the tower cranes on-site will not be used over the current residential properties and its activity will be contained within the boundaries of the COLPAI Project site.

Is there lighting on the tower crane?

There are lights fitted to the cranes exterior, these are directional Metal Halide lights that will be switched off at the end of each day along with the other lighting on-site

How long will the tower crane be on-site?

The tower crane will be on-site until Quarter 2 (April - June) 2021.

www.colpai-project.co.uk

 **ISLINGTON**
In partnership with



COLPAI Project Drop-In: SCHOOL BRICKWORK AND MATERIALITY

COLPAI
Project



Prescient image of similar brick



Barclay Silver Brick



On-site sample panel



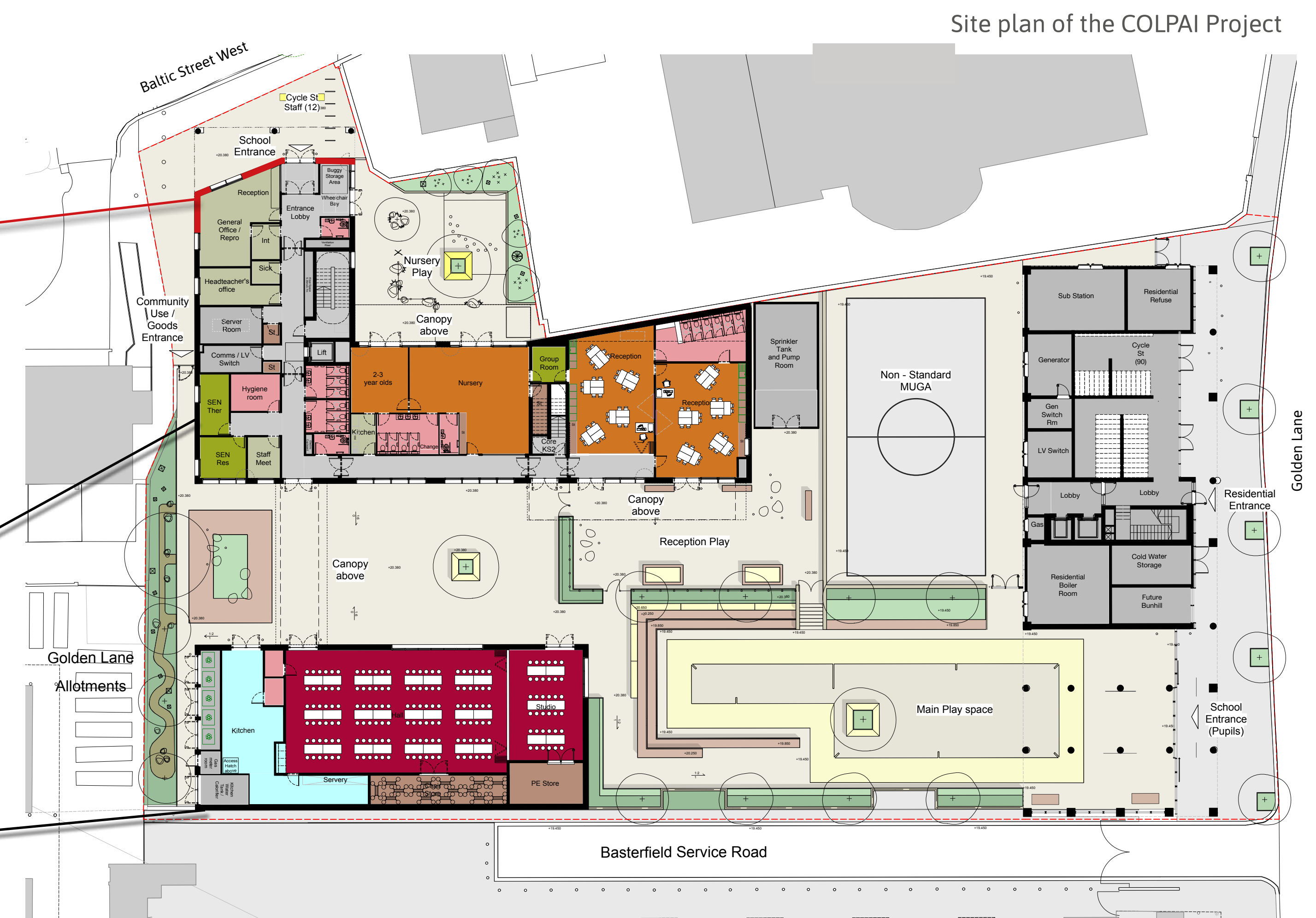
Prescient image of similar brick



Staffordshire Brown Brindle



On-site sample panel



As discussed in the September Public Meeting, the materiality and brickwork of the school has now been confirmed. Please see examples of the materiality to be used in the construction of the ColPAI School Building and School Hall.

www.colpai-project.co.uk

ISLINGTON
In partnership with



COLPAI Project Drop-In: SITE PROGRESS & UPCOMING WORKS

COLPAI
Project



Site Progress

The works currently taking place on-site are primarily groundworks, these include:

- ▶ Reduced level dig, backfilling works in the area for the residential building
- ▶ Groundworks and the pouring of concrete in the southern area for the residential building
- ▶ Groundworks and the pouring of concrete in the areas for the school buildings.

Upcoming Works

Over the next month the following activities will be undertaken on-site:

- ▶ Groundworks will continue as the project moves to the construction of the substructure and begin construction of the super structure from ground to first floor levels.

www.colpai-project.co.uk

 **ISLINGTON**
In partnership with



COLPAI Project Drop-In: 2020 PUBLIC MEETING & DROP-IN DATES



Community Meetings

Public meetings and Drop-In events have taken place monthly from July 2019. For clarity, please see a brief explanation to the format of these meetings Below:

Community Drop-In – During the event information boards are on display relating to project updates, upcoming works and any issues that may have been raised during the previous month. The City of London and wider project team are in attendance giving an opportunity for items to be discussed on an informal basis.

Public Meeting – These meetings are held as a forum, including a presentation from the project team and ends with a question and answer session, in which members of the public are able to raise questions with The City of London and the wider project team. The project team encourage questions to be submitted beforehand, to ensure answers are available at the event.

2020 Public Meeting & Drop-In Dates

Please see below the provisional COLPAI Project event dates for 2020. These dates may be subject to change. All COLPAI Project Drop-in and Meetings will be confirmed in the monthly newsletter or through updates to the community at least two weeks prior to the meeting taking place.



www.colpai-project.co.uk

 ISLINGTON
In partnership with



COLPAI Project Drop-In: PLANNING CONDITIONS PUBLIC CONSULTATION



On Thursday 27 February 2020, the project team will be presenting further information on the planning conditions listed below. Following this event, consultation will be open for three weeks, closing on Thursday 19 March 2020. An update of the feedback received and next steps will be shared during the March public meeting.

COLPAI Planning Conditions

- ▶ Delivery Servicing Plan for the City of London Primary Academy Islington
- ▶ Refuse and Recycling Provision for the City of London Primary Academy Islington
- ▶ Refuse Collection Point for the City of London Primary Academy Islington

Residential Building Planning Conditions

- ▶ Delivery Servicing Plan for the new residential building
- ▶ Refuse and Recycling Provision for the new residential building
- ▶ Refuse Collection point for the new residential building

COLPAI Project Landscaping Planning Conditions

- ▶ Placement of nesting boxes

The consultation timeline for the above conditions is detailed below:



www.colpai-project.co.uk

 **ISLINGTON**
In partnership with

