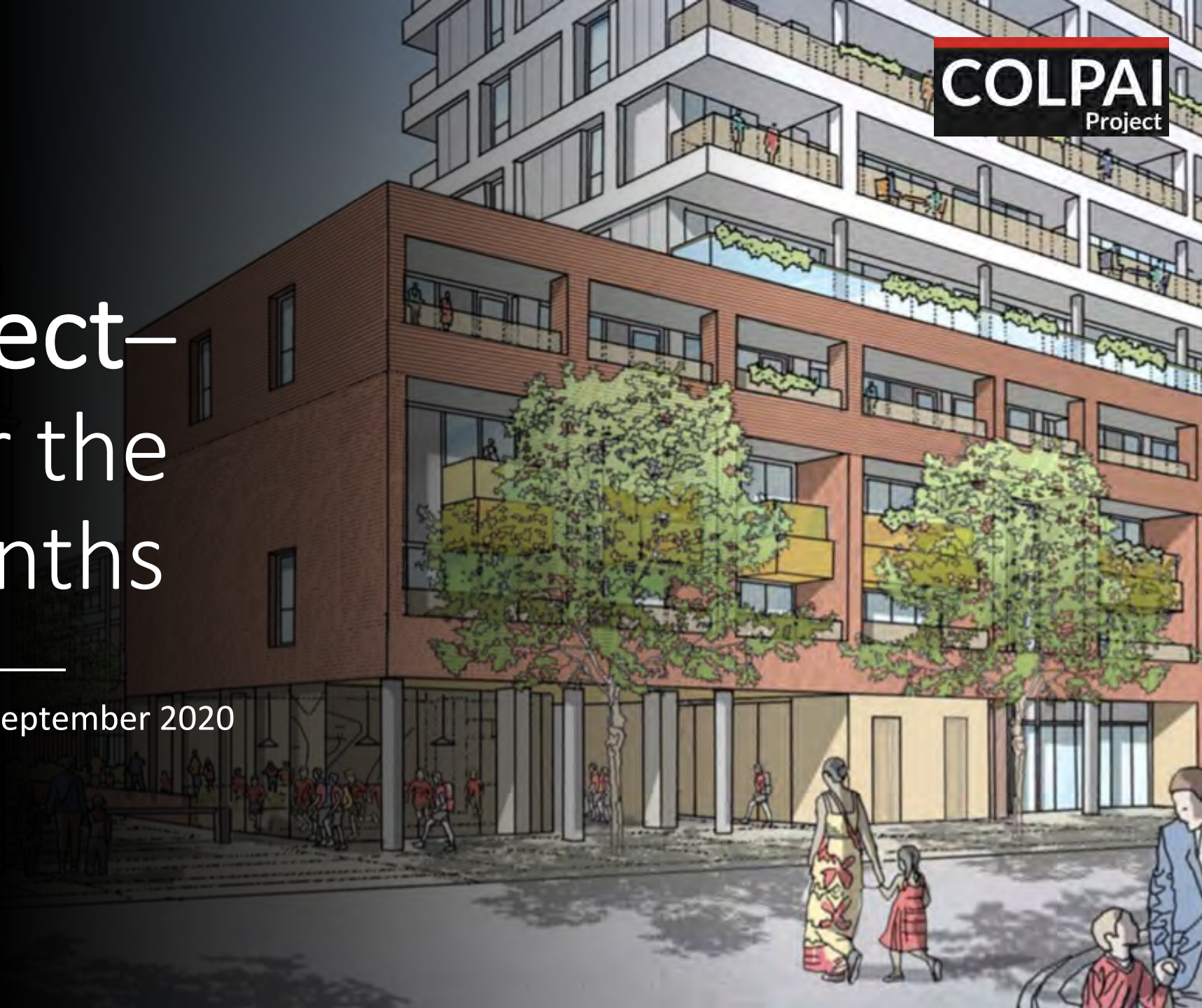




COLPAI Project— Progress over the following months

Community Online Meeting – 17 September 2020



Residential Tower

We are currently in the process of constructing the reinforced concrete frame from the ground floor .



Educational Buildings

We are now at the fit out stages of the Main School and Sports Hall construction.

Ongoing works consist of:

- Fit out works
- Envelope
- Drywall
- Screeding
- M.E.P
- Lift install
- External services.



Envelope – Brickwork and Window Installation



Left: Sports Hall



Right : Main school entrance

Drywall



Screeding



MEP Installation



Lift Installation



Roofing



Right:
Sports
Hall

Left:
Main
School



External Services



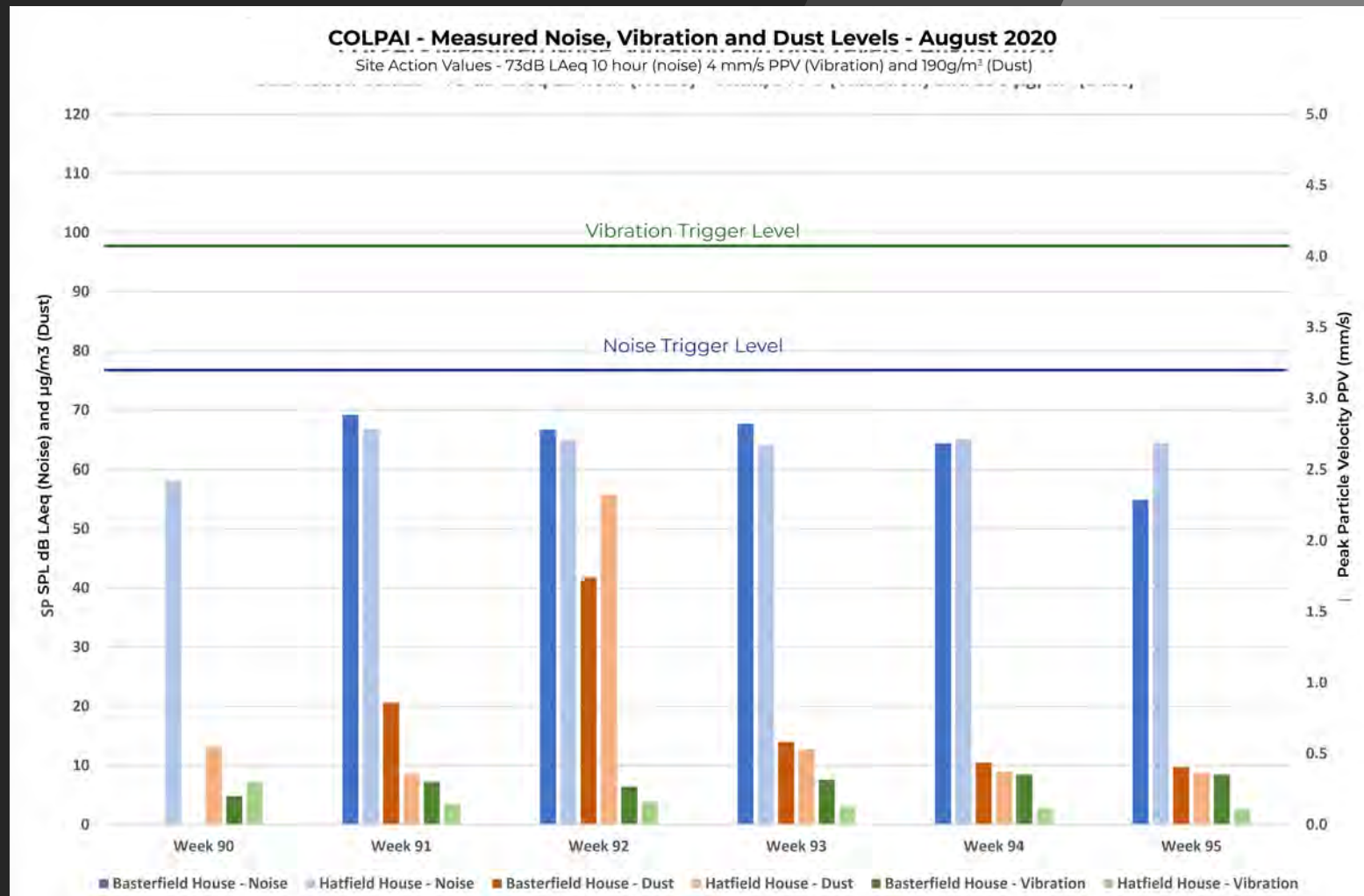
Monitoring Results

Dust, noise and vibration are being monitored on-site at three points along the hoarding. Three environmental monitors are installed directly around the site, with a further two monitors installed on Basterfield House and Hatfield House.

The monitors are set within acceptable tolerance levels and we endeavour at all times to keep within the dust, noise and vibration control limits expected by the City of London and the London Borough of Islington. If any of the control limits are exceeded, the monitors will alert the site team so that early remedial action can be taken.

To date, the maximum vibration level recorded internally at Basterfield House was 0.8mm/s, which is considerably below the trigger level of 4mm/s.

Noise and dust levels remain within established limits. The on-site team will continue to monitor these results and make the monitoring data available on our noticeboard on the site hoardings.



Q&A