



COLPAI Project— Progress of works on-site

Online public webinar

Thursday 20 May 2021, 7pm



Webinar protocol



- The project team is available to discuss and answer questions regarding progress with the works on-site only
- This meeting is not designed or intended to be solely a forum for debating planning related matters, which should be raised with the appropriate Planning Officers
- We request participants are respectful to all attendees so the webinar runs smoothly.

Residential building – Frame

Reinforced concrete frame completed to level 14, including the roof parapet



Residential building

External and party walls, as well as ductwork and preparation for screeding



Envelope – Brickwork, windows, louvres, sills and doors (main school building)

South Elevation



North Entrance



Envelope – Brickwork and doors (sports hall building)

North Elevation



Internal – Main school building

Level one classroom



Internal – Main school building

Level two toilets



Internal – Main school building

Level two corridor



Level two stair core



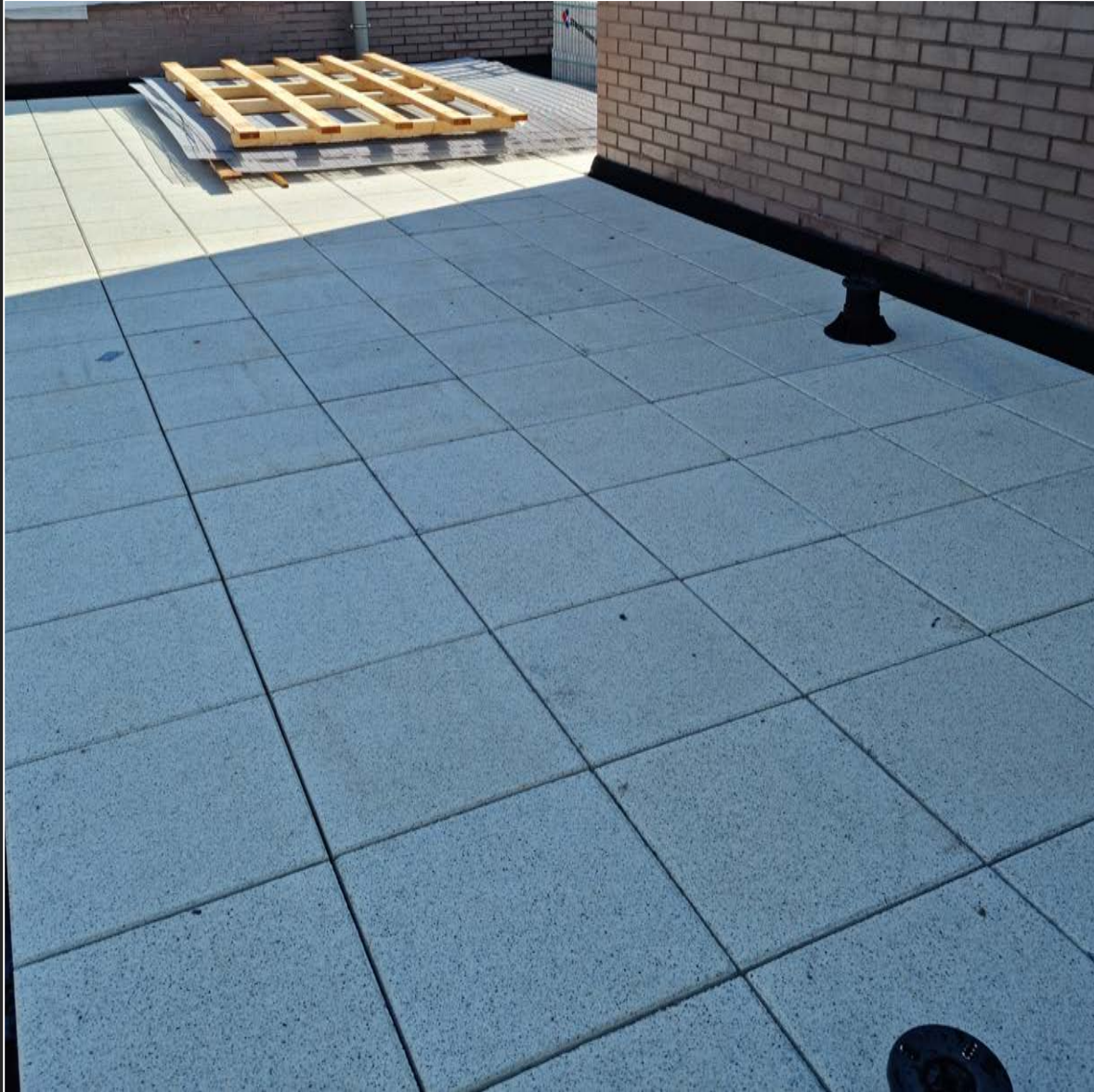
Internal – Main school building

Level two classroom



Roofing – Main school building and sports hall

Main school level three roof – Finished flooring being laid



Internal – Sports hall



Site lighting

Due to security as well as health and safety purposes, there will be a requirement for emergency strip lighting to be left on at all levels of the residential building.

The emergency lighting will remain on in all corridors, exit routes and new homes of the residential building for the duration of the construction period moving forward. Following the installation of windows, the residential building will be wrapped similarly to the educational buildings, but we expect that the lighting will remain visible.

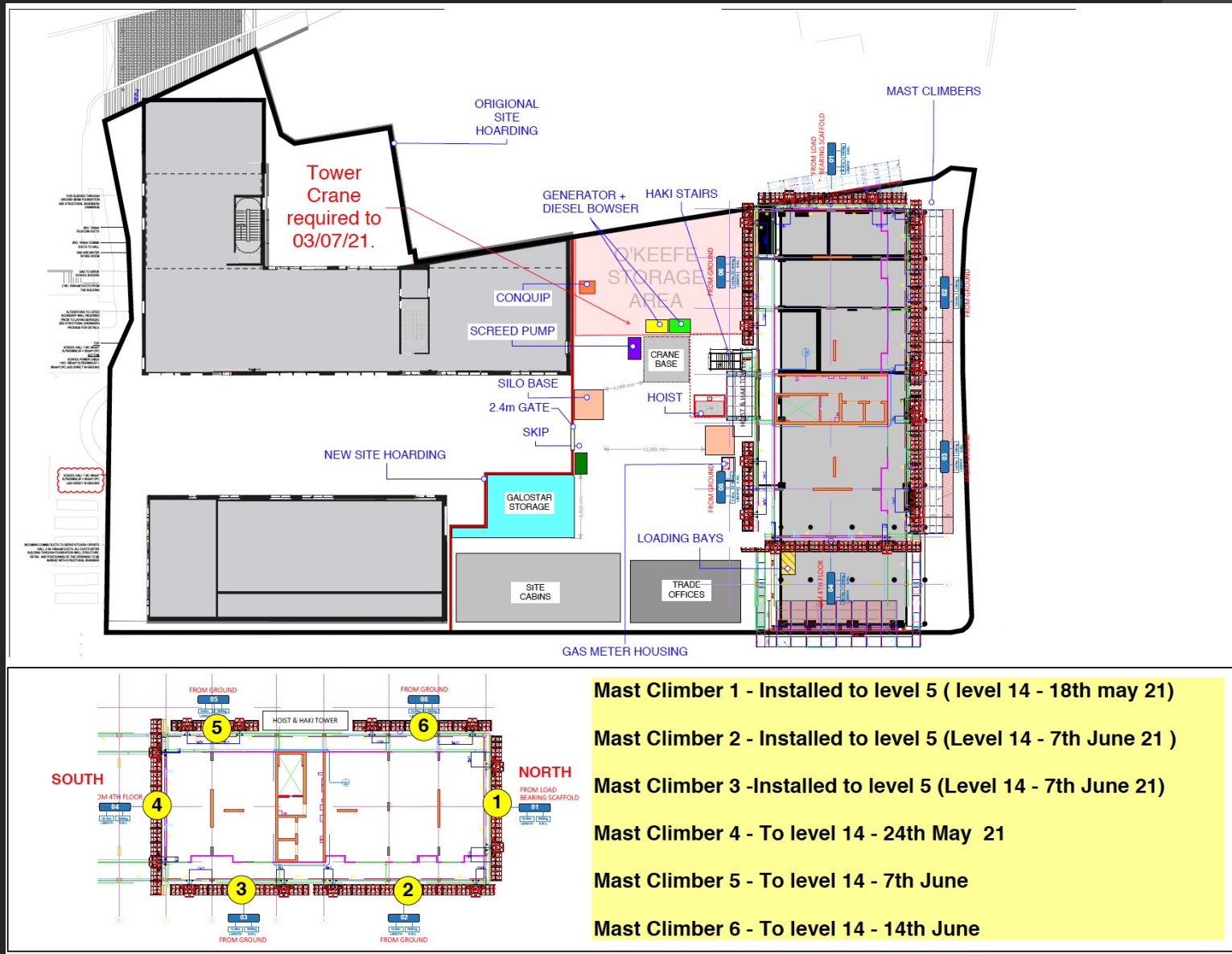


Sub-contractors



- During the construction period, there will be a requirement for works to be undertaken external to the COLPAI Project by sub-contractors.
- The sub-contractors will typically have their own agreed scope and permits to work, approved by the Local Highways Authority. ISG does not have authorisation over works undertaken by sub-contractors.
- The City Corporation and ISG are working closely together to keep residents informed of scheduled works on-site in the weekly works look-ahead. However, we are unable to comment on the timescales and nature of all works being undertaken by sub-contractors, as it is outside of our control.

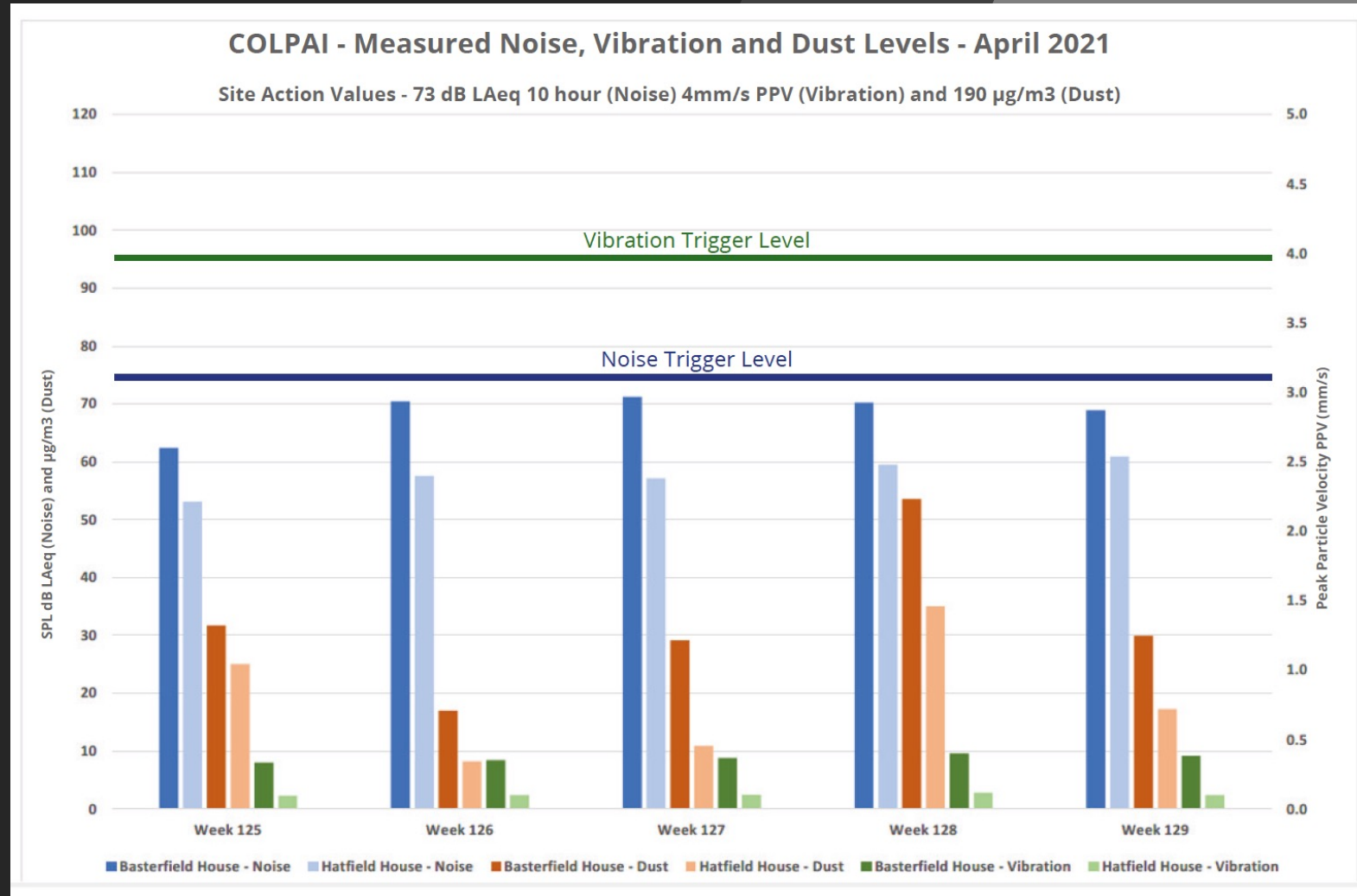
Logistics plan



Note - Generator and bowser are indicated but may not be required

Monitoring results – April 2021

- Dust, noise and vibration are being monitored onsite at three points along the hoarding. Three environmental monitors are installed directly around the site, with a further two monitors installed on Basterfield House and Hatfield House.
- The monitors are set within acceptable tolerance levels, ISG will always endeavor to keep within the dust, noise and vibration control limits expected by the City of London and the London Borough of Islington. If any of the control limits are exceeded, the monitors will alert the site team so that early remedial action can be taken.
- To date, the maximum vibration level recorded internally at Basterfield House was 0.8mm/s, which is considerably below the trigger level of 4mm/s.
- Noise and dust levels remain within established limits. The on-site team will continue to monitor these results and make the monitoring data available on our noticeboard on the site hoardings.



Working hours and COVID-19 guidance

Working hours

- Monday to Friday – 8am to 6pm
- Saturday – 9am to 2pm.

Temporary variation to working hours in the educational buildings

Monday – Friday

From Monday 10 May 2021 until Friday 11 June 2021, there will be a variation to working hours on-site within the educational buildings to facilitate testing and commissioning. The variation of working hours will be 6pm to 8:30pm on Monday to Friday.

Saturdays

On Saturday 15 May 2021, Saturday 22 May 2021, and Saturday 29 May 2021, there will be a variation to the workings hours on-site within the educational buildings to facilitate testing and commissioning. The variation of working hours will be from 2pm to 4pm.

HSE guidelines and support

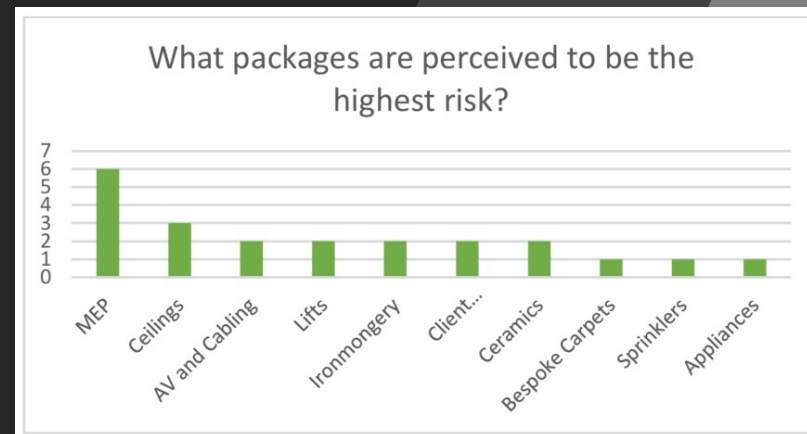
<https://www.hse.gov.uk/coronavirus/working-safely/index.htm>

Government guidelines

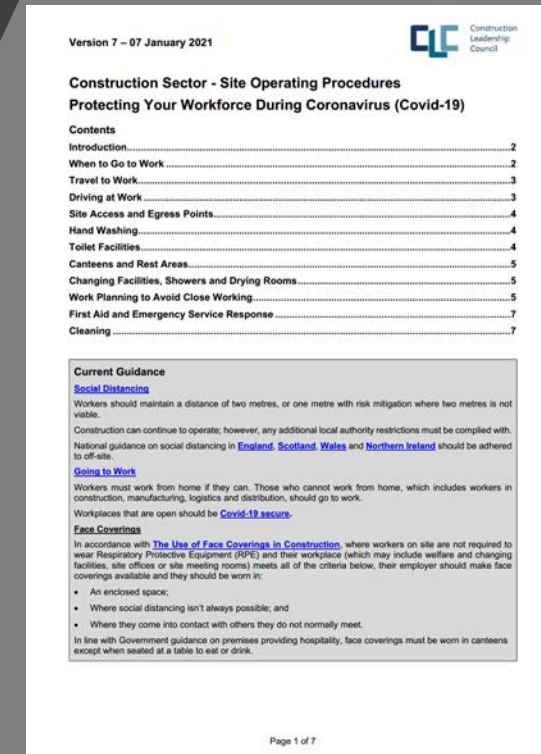
<https://www.gov.uk/coronavirus>



ISG



Internal statistics of most at risk trades – increased supervision and monitoring of workforce



Construction Leadership Council

Q&A