



COLPAI Project Progress of works on-site

Online public webinar

Thursday 18 March 2021, 7pm



Residential Building



Main School Envelope – Brickwork



South and East Elevation



West and North Elevation

Sports Hall Envelope – Brickwork



North and East elevation



West Elevation

Envelope – Window Installation – Main School Building



Drywall / Plastering – Main School Building



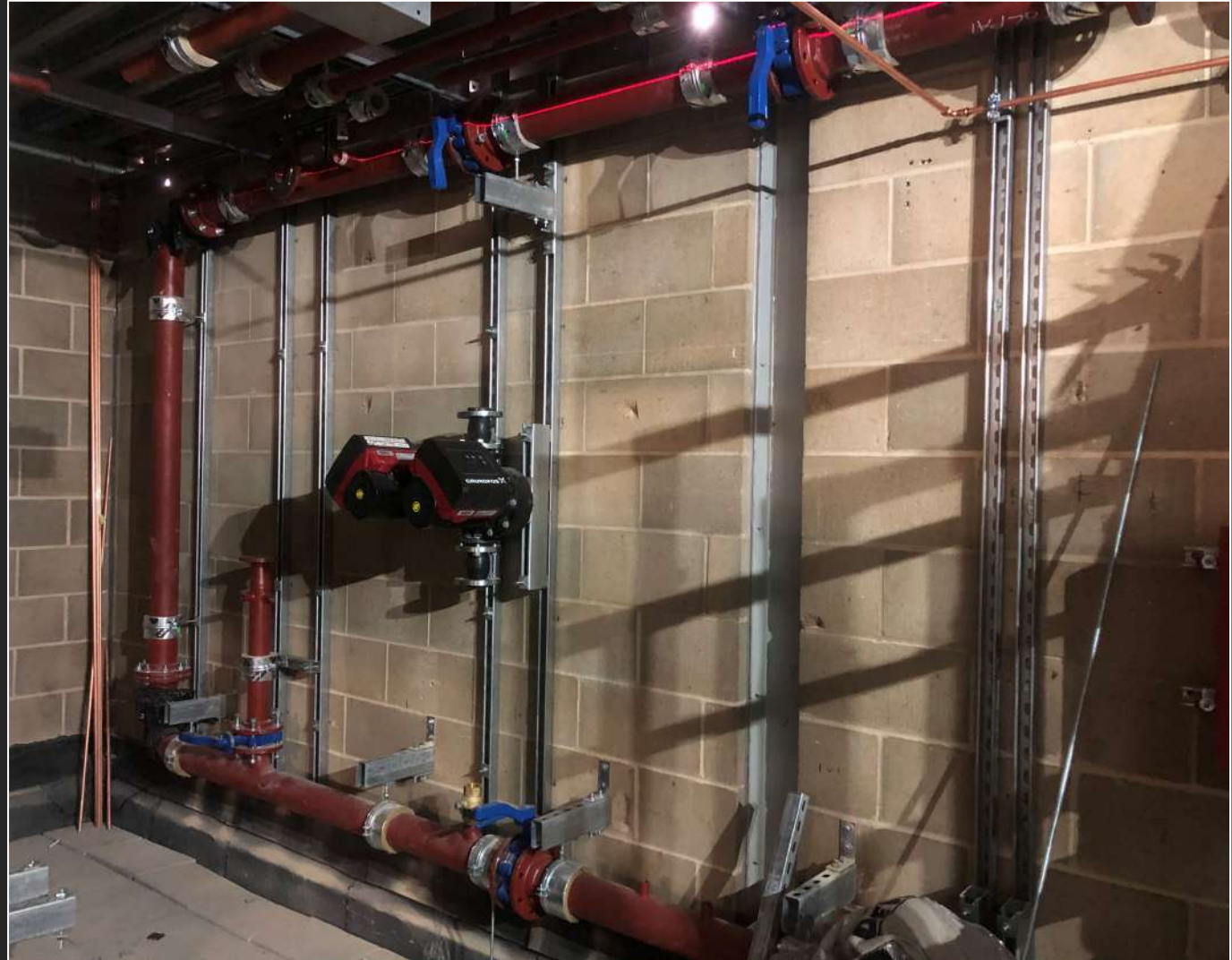
Drywall / Plastering – Sports Hall Building



Mechanical, Electrical and Plumbing (MEP) Installation – Main School Building



High Level Services



Internal Plant Room Services

Mechanical, Electrical and Plumbing (MEP) Installation – Sports Hall



High Level Services

Roof Progress – Main School Building



Plant Roof Rain Screens



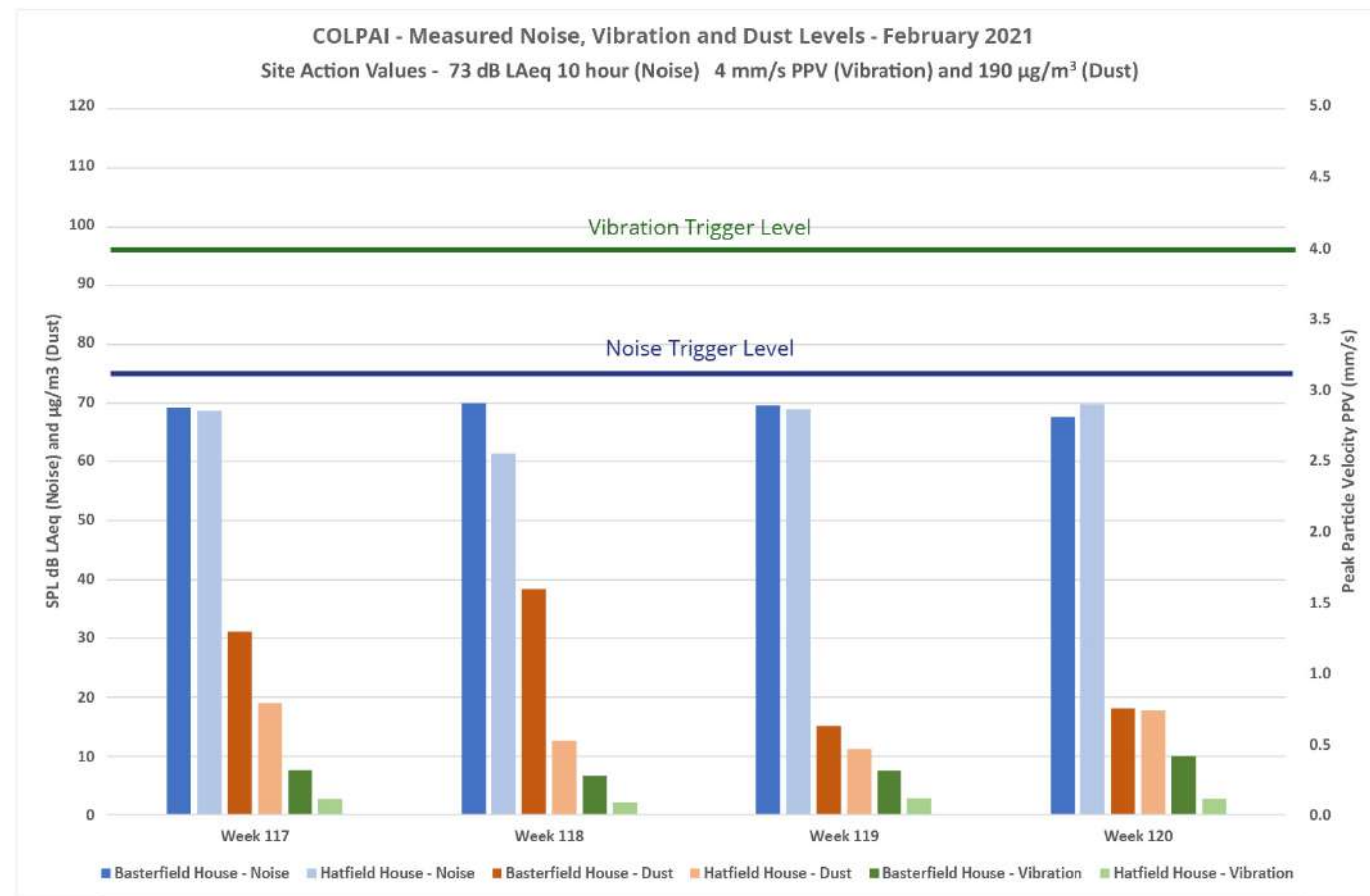
Level 3 Roof Playground Screens

Stair Core – Main School Building



Monitoring Results

- Dust, noise and vibration are being monitored onsite at three points along the hoarding. Three environmental monitors are installed directly around the site, with a further two monitors installed on Basterfield House and Hatfield House.
- The monitors are set within acceptable tolerance levels and we endeavour at all times to keep within the dust, noise and vibration control limits expected by the City of London and the London Borough of Islington. If any of the control limits are exceeded, the monitors will alert the site team so that early remedial action can be taken.
- To date, the maximum vibration level recorded internally at Basterfield House was 0.8mm/s, which is considerably below the trigger level of 4mm/s.
- Noise and dust levels remain within established limits. The on-site team will continue to monitor these results and make the monitoring data available on our noticeboard on the site hoardings.



Working Hours and COVID-19 Guidance

ISG current working hours

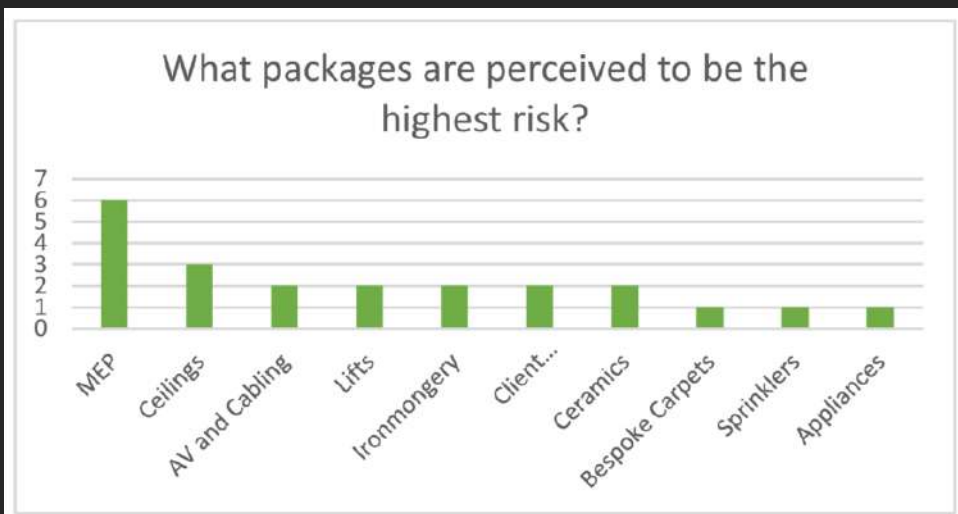
- Monday to Friday – 8am to 6pm
- Saturday – 9am to 2pm.

Government Guidelines

<https://www.gov.uk/coronavirus>

HSE Guidelines and support

<https://www.hse.gov.uk/coronavirus/working-safely/index.htm>



Internal statistics of most at risk trades – increased supervision and monitoring of workforce

Version 7 – 07 January 2021



Construction Sector - Site Operating Procedures Protecting Your Workforce During Coronavirus (Covid-19)

Contents	
Introduction.....	2
When to Go to Work	2
Travel to Work.....	3
Driving at Work.....	3
Site Access and Egress Points.....	4
Hand Washing.....	4
Toilet Facilities.....	4
Canteens and Rest Areas.....	5
Changing Facilities, Showers and Drying Rooms.....	5
Work Planning to Avoid Close Working.....	5
First Aid and Emergency Service Response.....	7
Cleaning.....	7

Current Guidance

Social Distancing

Workers should maintain a distance of two metres, or one metre with risk mitigation where two metres is not viable.

Construction can continue to operate; however, any additional local authority restrictions must be complied with.

National guidance on social distancing in [England](#), [Scotland](#), [Wales](#) and [Northern Ireland](#) should be adhered to off-site.

Going to Work

Workers must work from home if they can. Those who cannot work from home, which includes workers in construction, manufacturing, logistics and distribution, should go to work.

Workplaces that are open should be [Covid-19 secure](#).

Face Coverings

In accordance with [The Use of Face Coverings in Construction](#), where workers on site are not required to wear Respiratory Protective Equipment (RPE) and their workplace (which may include welfare and changing facilities, site offices or site meeting rooms) meets all of the criteria below, their employer should make face coverings available and they should be worn in:

- An enclosed space;
- Where social distancing isn't always possible; and
- Where they come into contact with others they do not normally meet.

In line with Government guidance on premises providing hospitality, face coverings must be worn in canteens except when seated at a table to eat or drink.

Construction Phase Logistics and Early Handover of the School Building



- 1 School personnel and pupil access via Baltic Street West
- 2 New hoarding segregating school
- 3 Site offices and welfare
- 4 Material and personnel hoist
- 5 Main construction access gates with personnel access and wheel wash facilities
- 6 Hoarding (2.4 metres high)
- 7 Safe route
- 8 Site security
- 9 Access for emergency services and large school deliveries. Access to be kept clear of materials at all times

Q&A