



COLPAI Project— Progress of works on-site

Online public webinar

Wednesday 15 December 2021, 7pm



Webinar protocol



- The project team is available to discuss and answer questions regarding progress with the works on-site only
- This meeting is not designed or intended to be solely a forum for debating planning related matters, which should be raised with the appropriate Planning Officers
- We request participants are respectful to all attendees so the webinar runs smoothly.

School building

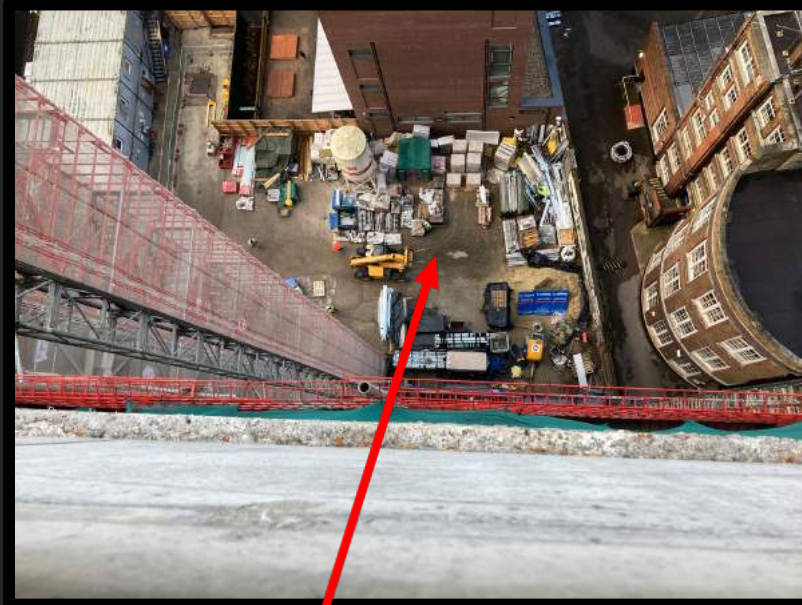


Residential building

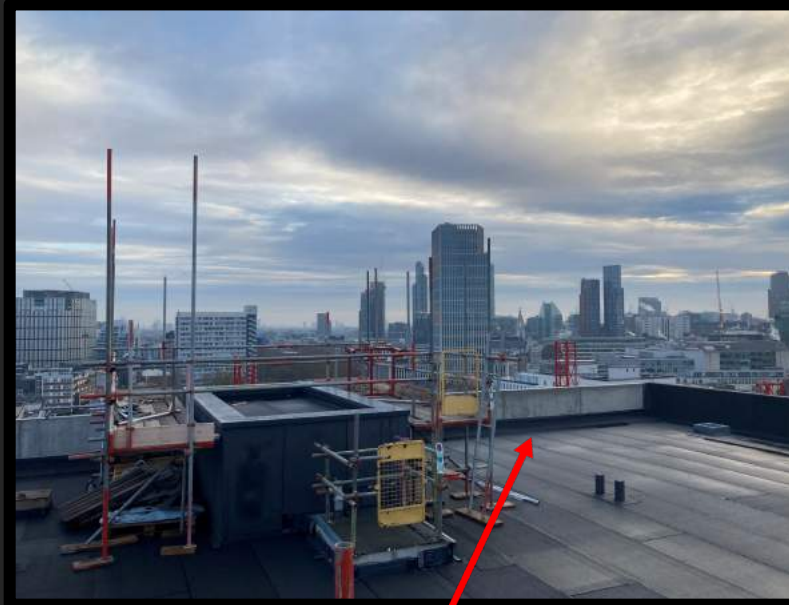


External elevation views from Golden lane

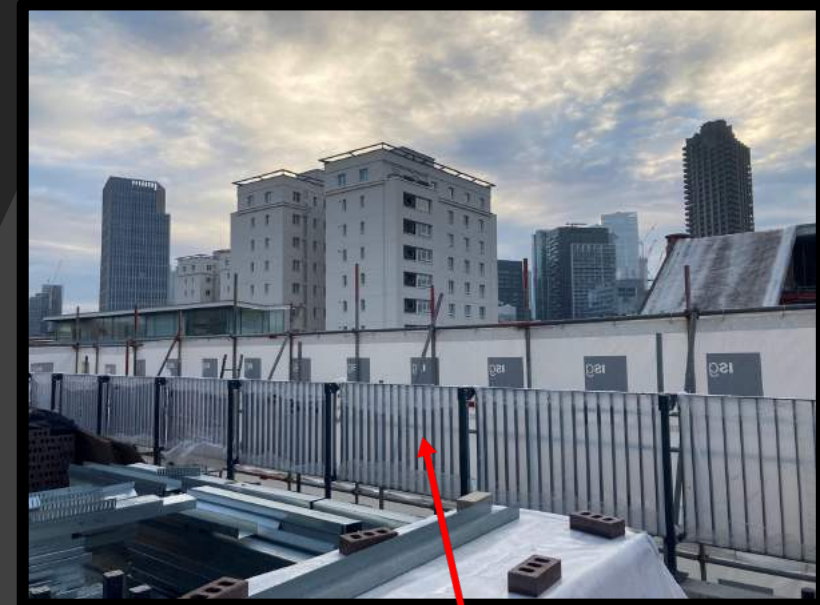
Residential building



View from roof of the residential tower depicting external compound.



View from roof of the residential tower including waterproofing works to the lift overrun.

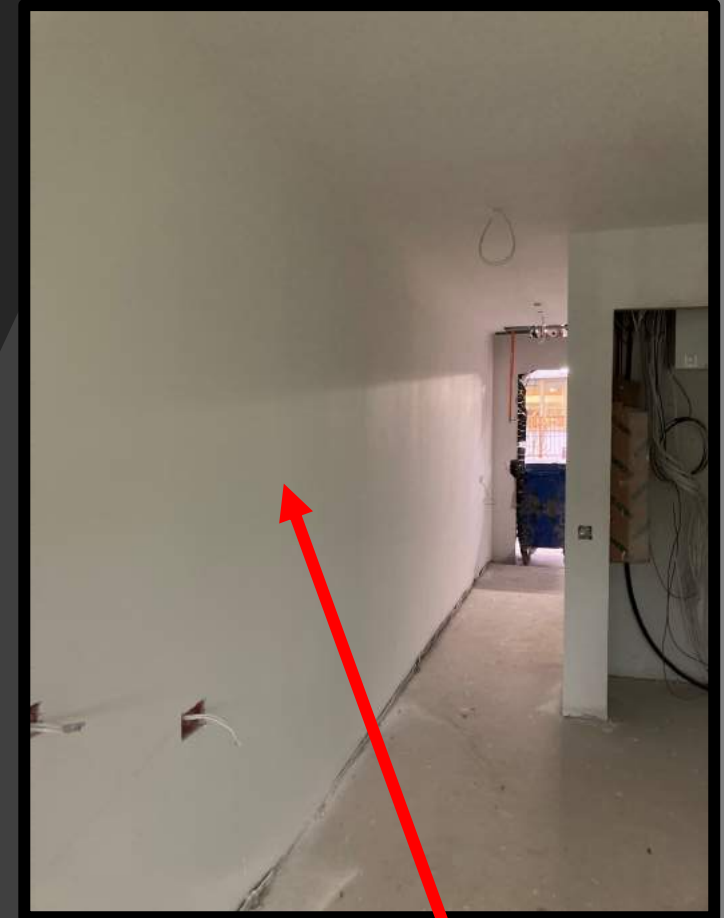


View of London skyline from the level 04 roof including recently installed balustrade.

Residential building



Internal door installation ongoing throughout levels 03 and 04 of the residential tower apartments.



Ongoing decoration works throughout lower levels of the residential tower.

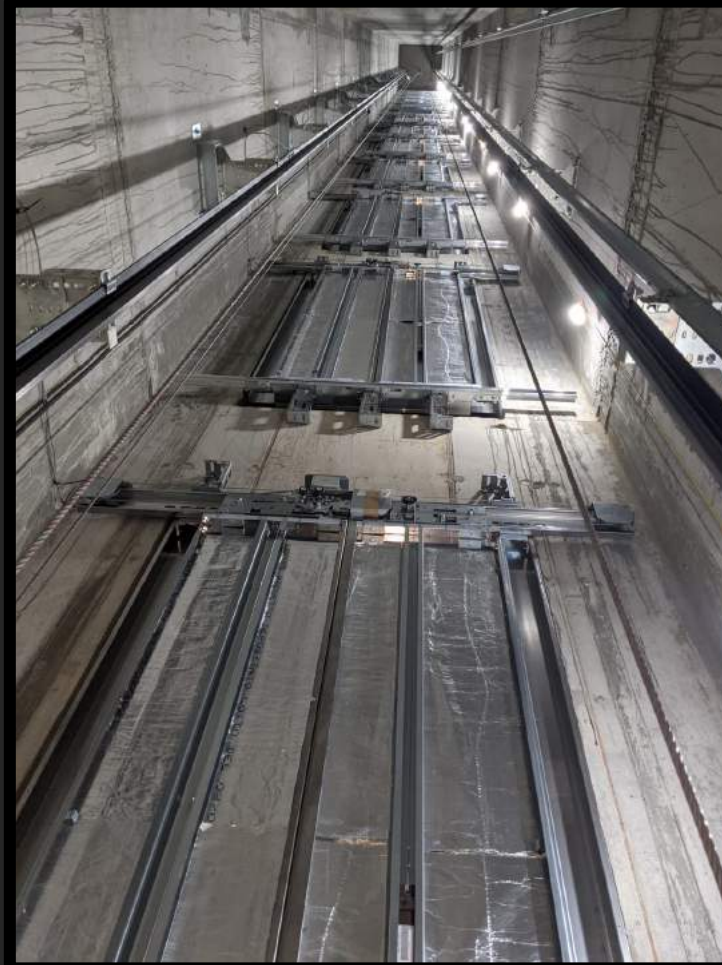
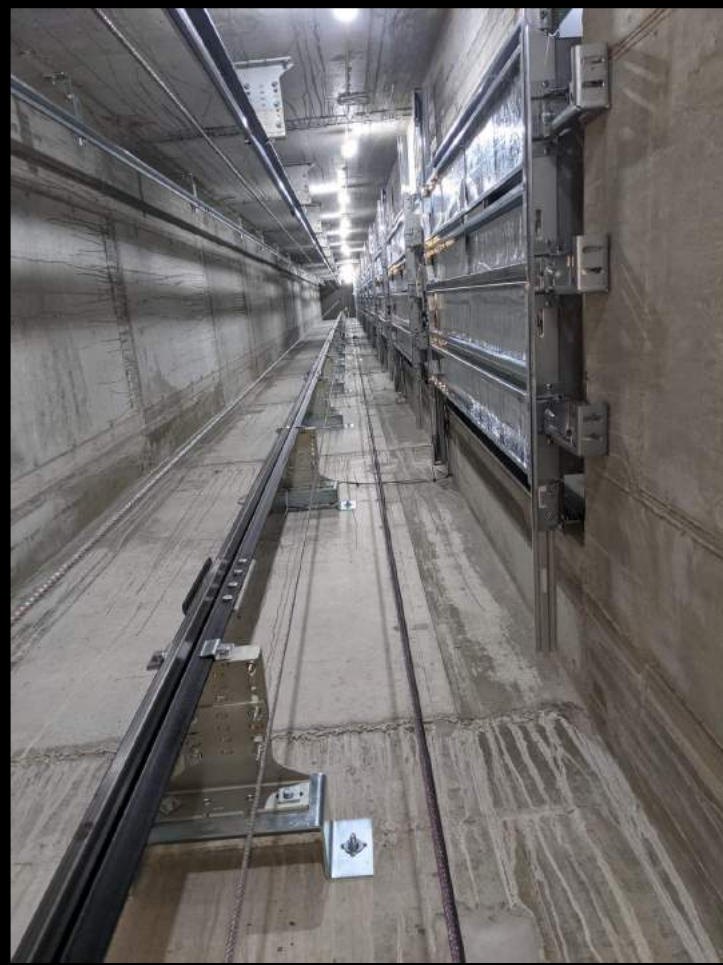
Residential building



Photos depicting mist coat painting works
and areas ready for kitchen unit installation.

External MVHR
ductwork penetrations

Residential building



Internal lift installation progress including the lift car, guide rails and doors.

Residential building



Riser door access hatch
benchmark process.



High level 1st fix M&E
installation ongoing
throughout.



External brickwork
façade installation.

Working hours and COVID-19 guidance

Working hours

Monday to Friday

- 8am - 6pm

Saturday

- 9am - 2pm

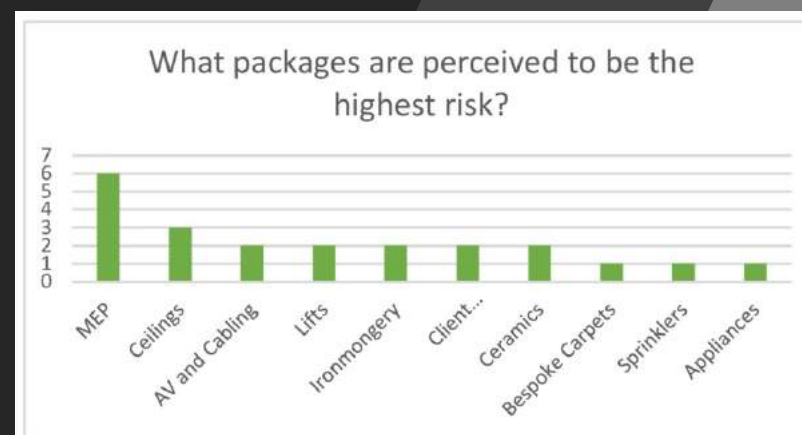
- All monitoring has now been removed following completion of the School

HSE guidelines and support

<https://www.hse.gov.uk/coronavirus/working-safely/index.htm>

Government guidelines

<https://www.gov.uk/coronavirus>



Internal statistics of most at risk trades – increased supervision and monitoring of workforce

Version 7 – 07 January 2021

Construction Sector - Site Operating Procedures
Protecting Your Workforce During Coronavirus (Covid-19)

Contents

Introduction	2
When to Go to Work	2
Travel to Work	3
Driving at Work	3
Site Access and Egress Points	4
Hand Washing	4
Toilet Facilities	4
Canteens and Rest Areas	5
Changing Facilities, Showers and Drying Rooms	5
Work Planning to Avoid Close Working	5
First Aid and Emergency Service Response	7
Cleaning	7

Current Guidance

Social Distancing
 Workers should maintain a distance of two metres, or one metre with risk mitigation where two metres is not viable.
 Construction can continue to operate; however, any additional local authority restrictions must be complied with.
 National guidance on social distancing in [England](#), [Scotland](#), [Wales](#) and [Northern Ireland](#) should be adhered to off-site.

Going to Work
 Workers must work from home if they can. Those who cannot work from home, which includes workers in construction, manufacturing, logistics and distribution, should go to work.
 Workplaces that are open should be [Covid-19 secure](#).

Face Coverings
 In accordance with [The Use of Face Coverings in Construction](#), where workers on site are not required to wear Respiratory Protective Equipment (RPE) and their workplace (which may include welfare and changing facilities, site offices or site meeting rooms) meets all of the criteria below, their employer should make face coverings available and they should be worn in:
 • An enclosed space;
 • Where social distancing isn't always possible; and
 • Where they come into contact with others they do not normally meet.
 In line with Government guidance on premises providing hospitality, face coverings must be worn in canteens except when seated at a table to eat or drink.

Page 1 of 7

Construction Leadership Council

Christmas closure arrangements

SITE SHUTDOWN DATES

- Thursday 23rd December – 4th January 2022

EMERGENCY ARRANGEMENTS

- Out of hours security coverage through our logistics provider, they will attend to any alarm activation
- 24-hour monitored CCTV security cover
- ISG hold emergency contacts for all members of the supply chain and they can be contacted in an emergency.

To contact the 24-hour emergency hotline during the Christmas period call 0207 247 1717

Q&A