



COLPAI Project— Progress of works on-site

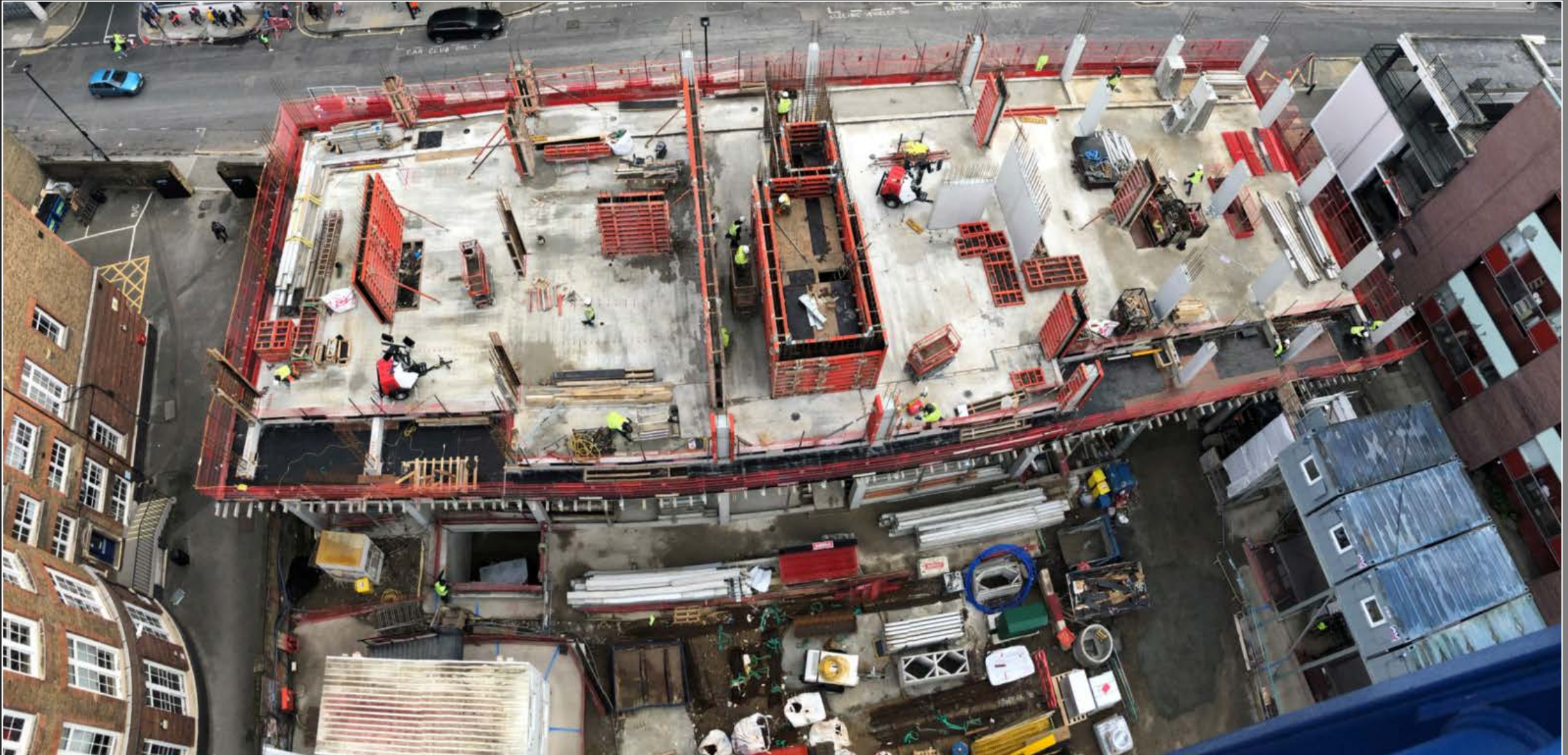
Online public webinar

Thursday 19 November 2020, 7pm



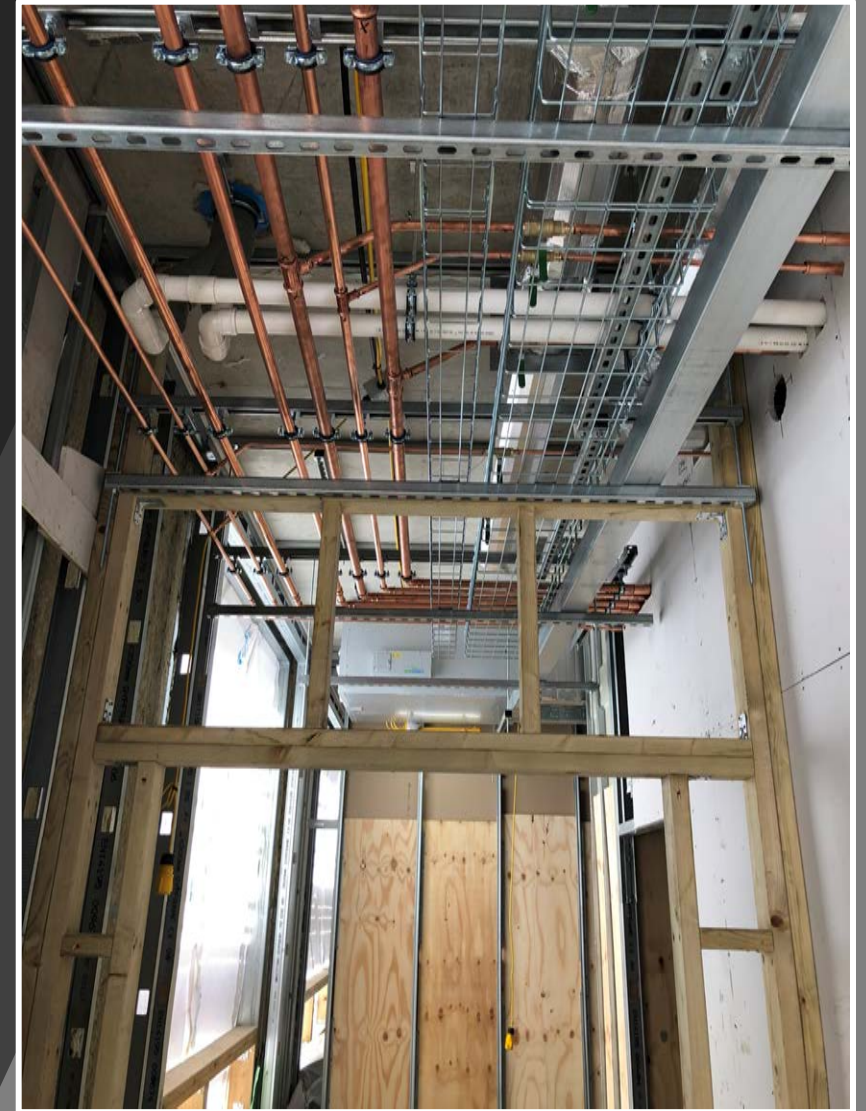
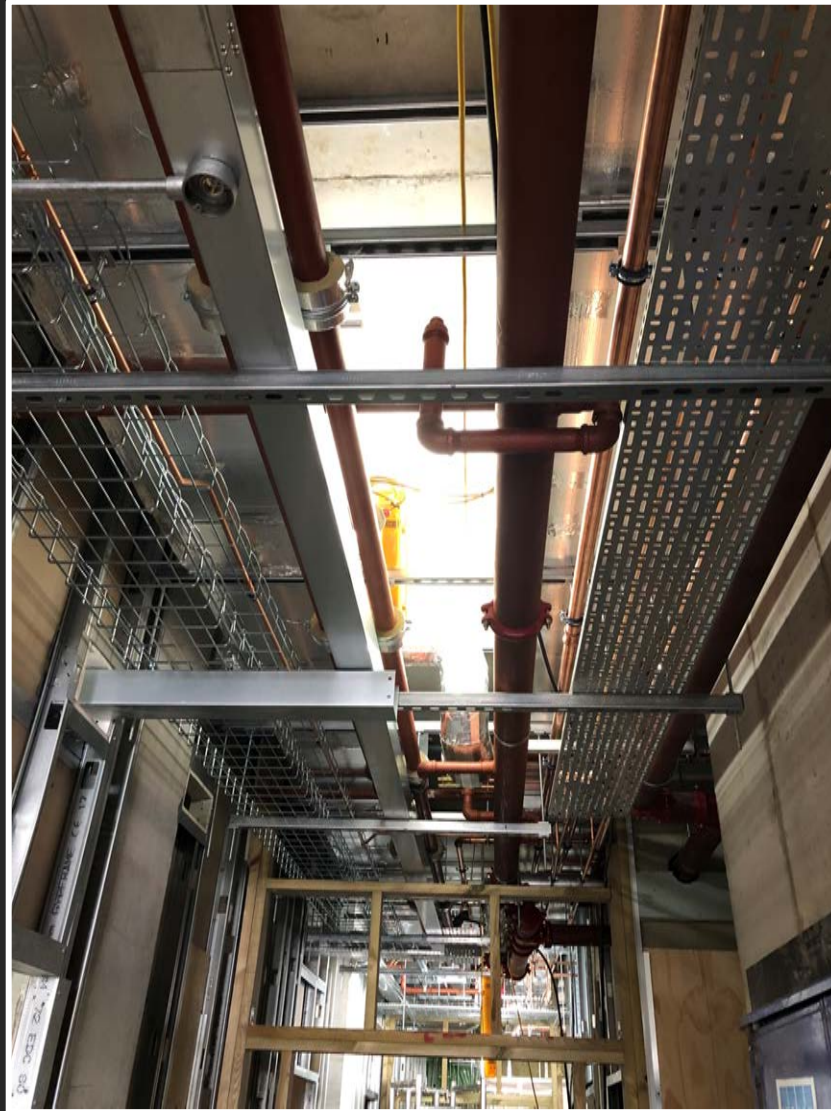
Residential building

The residential building has now been constructed to level three and is progressing well



Educational buildings

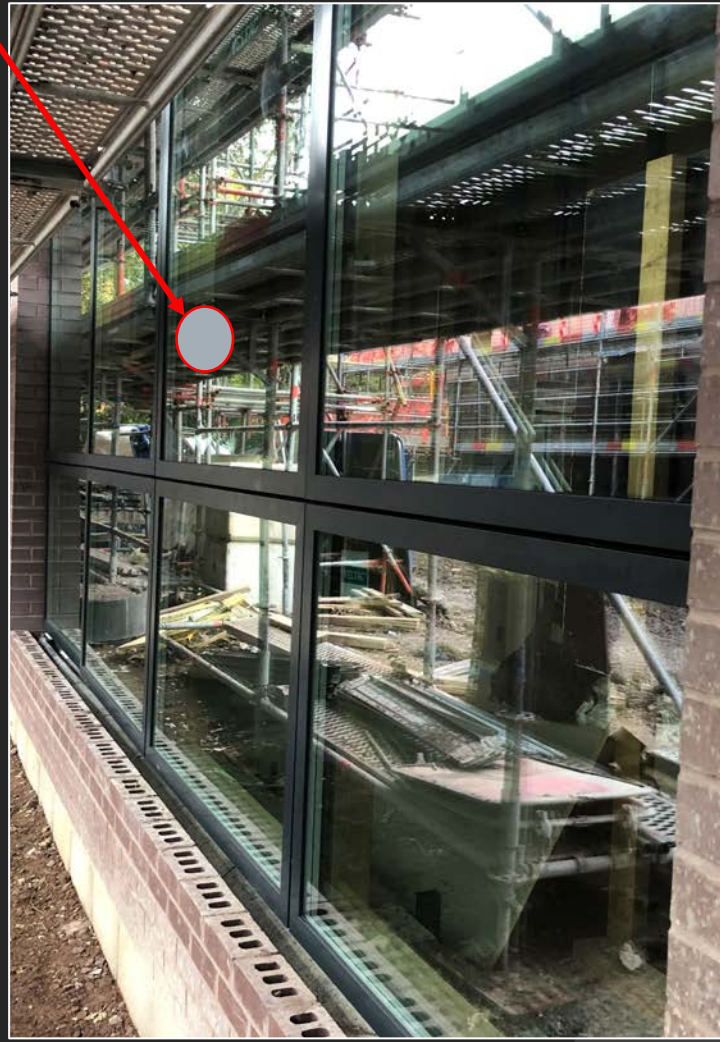
The fit out is now well underway



Envelope – brickwork and window installation (main school building)

Main school – ground floor

Main school – level two



Envelope – main school and sports hall



Drywall – main school



Mechanical, electrical and plumbing (MEP) installation – main school



Lift installation – main school

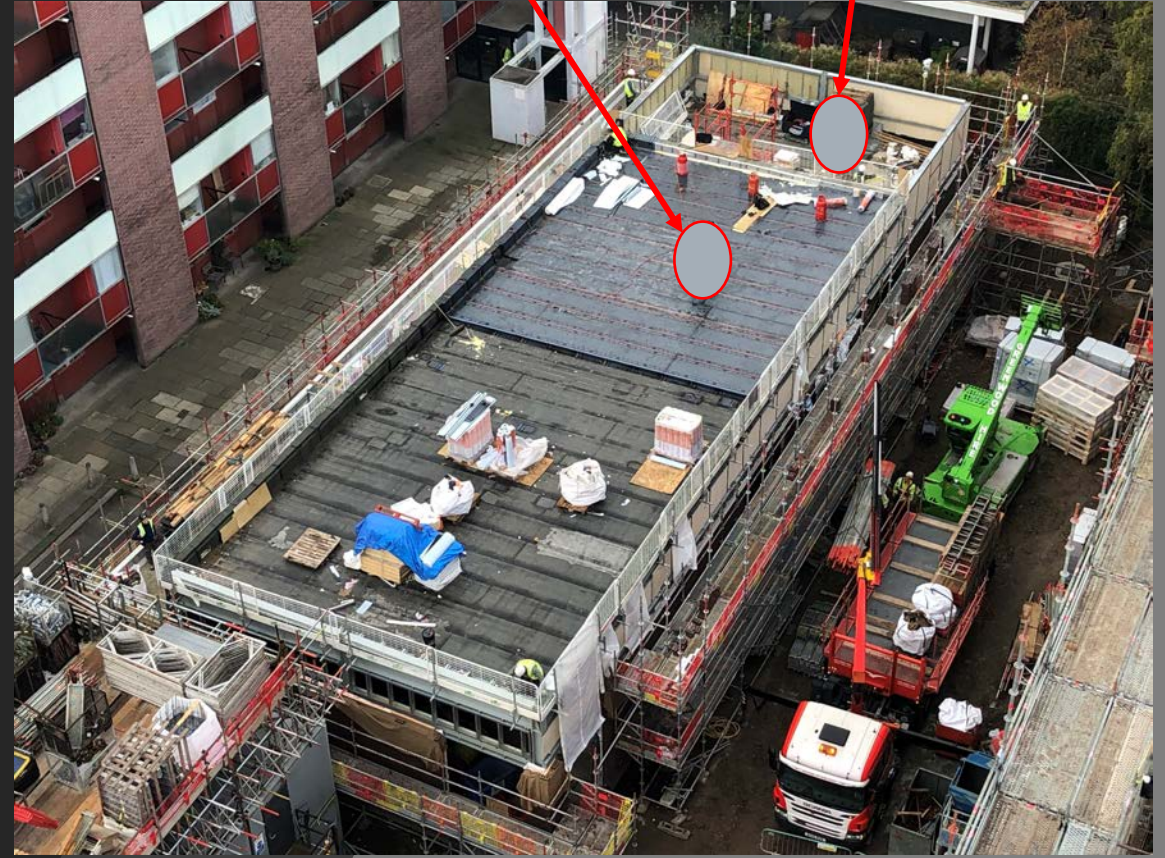


Roofing – main school and sports hall

Main school roof



Insulation install



External infrastructure services



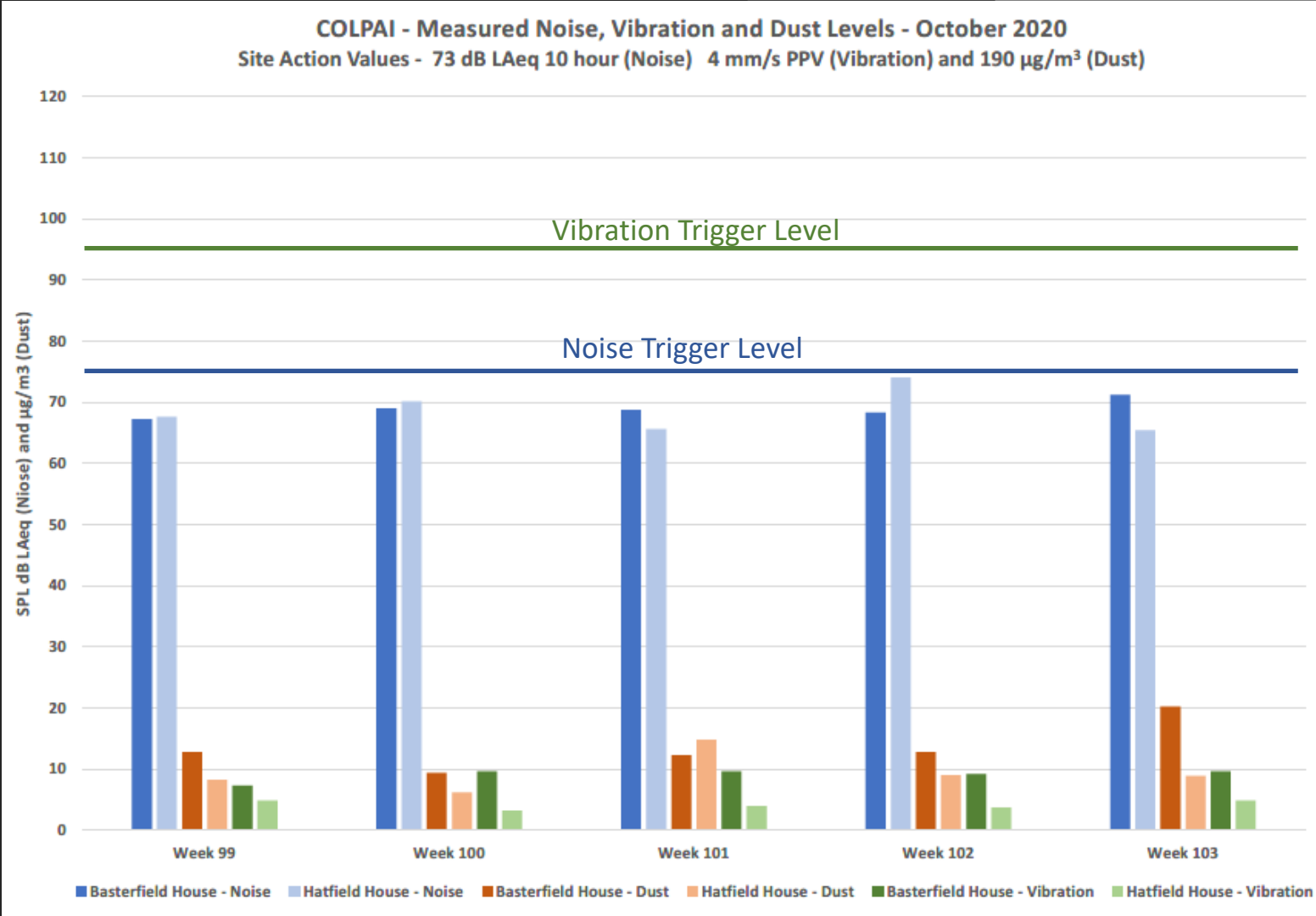
Monitoring results

Dust, noise and vibration are being monitored onsite at three points along the hoarding. Three environmental monitors are installed directly around the site, with a further two monitors installed on Basterfield House and Hatfield House.

The monitors are set within acceptable tolerance levels and we endeavour at all times to keep within the dust, noise and vibration control limits expected by the City of London and the London Borough of Islington. If any of the control limits are exceeded, the monitors will alert the site team so that early remedial action can be taken.

To date, the maximum vibration level recorded internally at Basterfield House was 0.8mm/s, which is considerably below the trigger level of 4mm/s.

Noise and dust levels remain within established limits. The on-site team will continue to monitor these results and make the monitoring data available on our noticeboard on the site hoardings.



Christmas working hours and emergency arrangements



Working hours

- ISG will finish work on Wednesday 23 December 2020 and re-start on Monday 4 January 2021.

Emergency arrangements

- We have out of hours security coverage through our logistics provider. They will attend to any alarm activation
- We will maintain 24 hour monitored CCTV security cover
- ISG will maintain a 24 hour emergency hotline to deal with any enquiries from the public. This is accessed by calling the main ISG switchboard number 0207 247 1717. Once the call is received the message is sent on to Senior Managers who are on call to deal with any unplanned event
- ISG also hold emergency contacts for all members of the supply chain and they can be contacted in an emergency.

Q&A