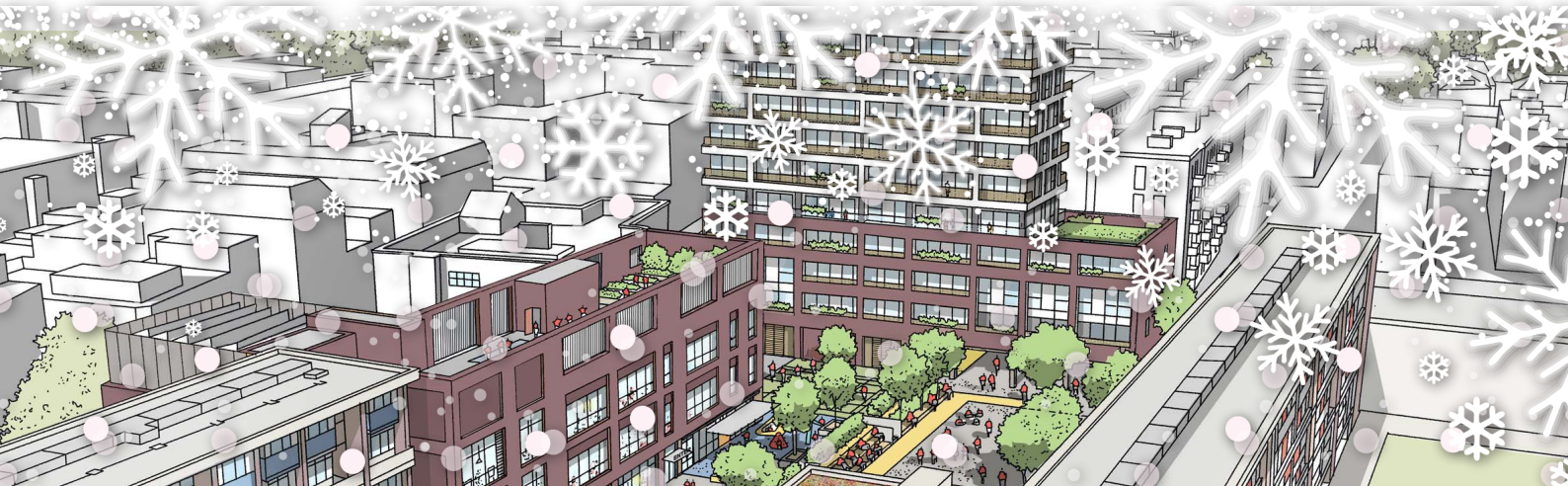


COLPAI Project Newsletter

Monthly Newsletter

www.colpai-project.co.uk

COLPAI Project



Dear Neighbour

We are writing to update you on the progress on-site at the COLPAI Project, as well as update you regarding Christmas closure and emergency procedures.

We have been progressing well with works on-site. The residential building is progressing and construction of the fourth floor has now started. We expect the fourth floor to be completed in the next couple of weeks. As part of the works, a projecting netted fan has been erected on the south face of the building over the entrance to Basterfield Service Road.

The fit out of the educational buildings is well underway, including brickwork and window installation. Works in the main school building have included mechanical, electrical and plumbing (MEP), lift and drywall installation. Works have also taken place to the roof of the main school and sports hall. External infrastructure services continue to be installed. As ISG progress with construction, the hoarding on-site is also going to be reconfigured and given a refresh in the New Year. On page three of this newsletter, you can find some photos of the progress on-site.

Thank you to those who attended our online public webinar on Thursday 19 November 2020. Copies of all of the materials including a recording of the webinar, the presentation and notes are available on our project website www.colpai-project.co.uk in the 'downloads' section.

Following comments from the local community, timers have been added to the floodlights, which means there is an automatic fail safe in place to turn off when ISG and contractors leave the site.

ISG will undertake a full check of the site to ensure all lights that can be turned off are switched off when they leave the site. However, please note a number of lights need to be left on for health and safety on-site. If you see any floodlights on, please do send a photo to info@colpai-project.co.uk and ISG will investigate.

WORKING HOURS

The consented working hours are:

Monday to Friday
8am to 6pm

Saturday
9am to 2pm

The consented reduced impact hours are:

Monday to Friday
10am to 12pm
and 2pm to 4pm

KEY CONTACTS

For site emergencies, please contact:

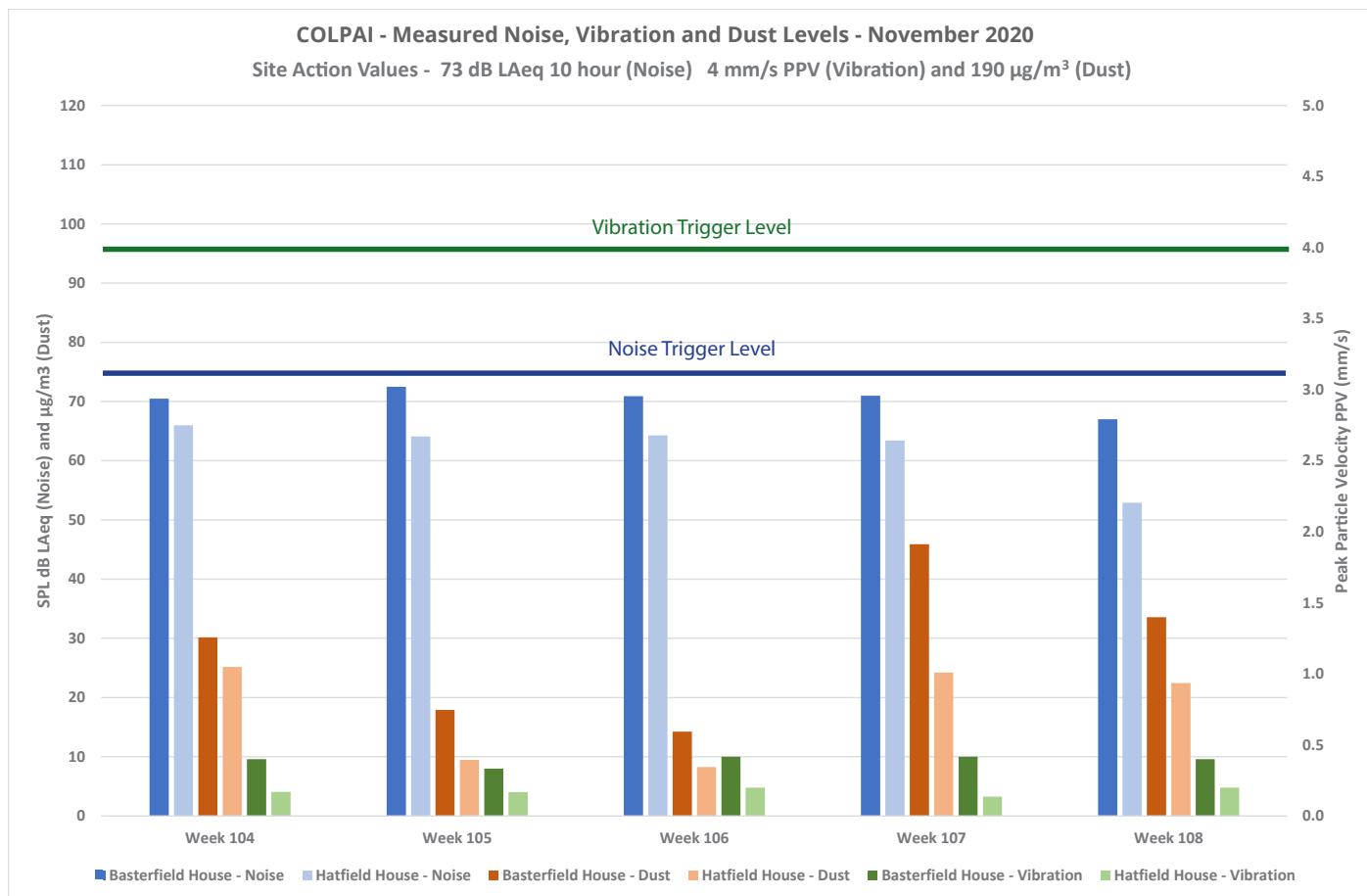
Steven McCarthy, ISG
T: 07825 719 496

For general enquiries, please contact the project team:

E: info@colpai-project.co.uk
T: 0800 772 0475

For the Department of Community and Children's Services (DCCS), please contact:

Paul Murtagh
T: 0207 332 3015



November 2020 Monitoring Results

COLPAI PROJECT WEBINAR

On **Thursday 21 January 2020 at 7pm**, our next online public webinar is being held to provide an update of the works on-site and provide the local community with an opportunity to ask the project team questions. Please visit the project website www.colpai-project.co.uk to register for the webinar.

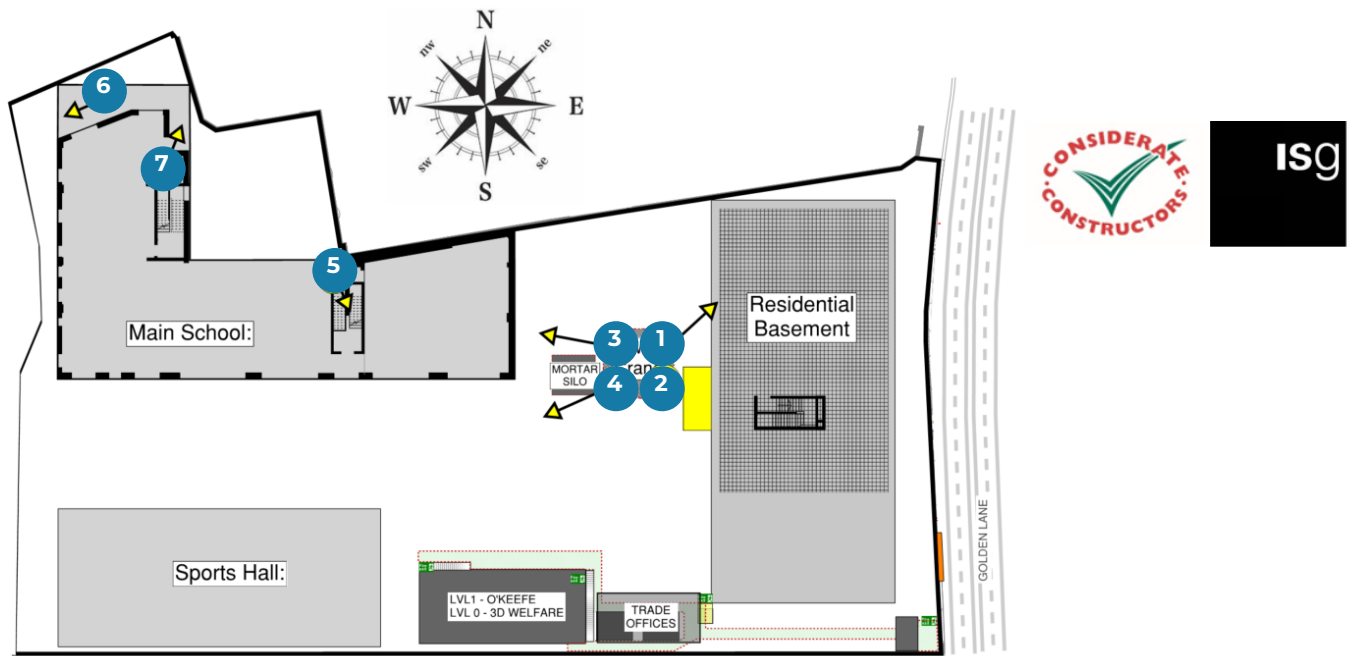
CHRISTMAS CLOSURE

ISG will finish work on **Wednesday 23 December 2020** and re-start on **Monday 4 January 2021**.

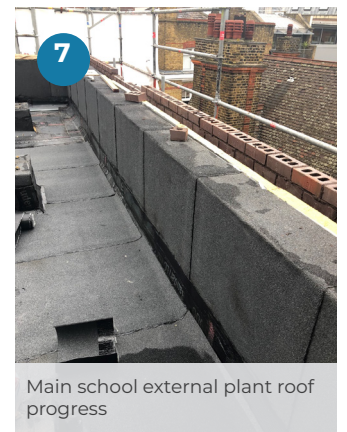
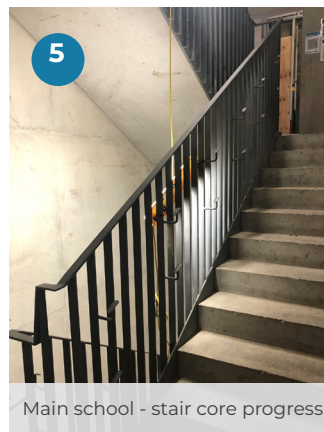
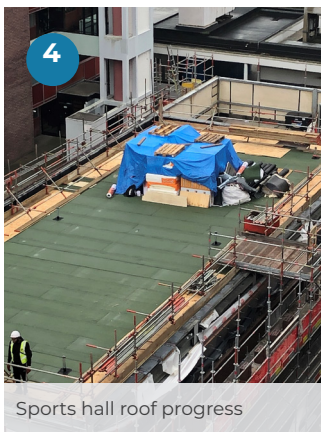
EMERGENCY ARRANGEMENTS

- Out of hours security coverage through our logistics provider, they will attend to any alarm activation
- 24-hour monitored CCTV security cover
- ISG hold emergency contacts for all members of the supply chain and they can be contacted in an emergency.

To contact the 24-hour emergency hotline during the Christmas period call 0207 247 1717



Map showing the COLPAI Project site



The works at the COLPAI Project are continuing in strict accordance with guidelines issued by the Government and Public Health England relating to COVID-19. The situation surrounding COVID-19 is ever-changing. Our team is consistently monitoring and following Government guidance and Public Health England advice.

We thank you for your continued cooperation throughout this year and wish you and your families a very Merry Christmas and a Happy New Year.

Best wishes

COLPAI Project Team

ISLINGTON
In partnership with

