

COLPAI Project Newsletter

www.colpai-project.co.uk



Dear Neighbour

We are writing to you to update you on the progress on-site at the COLPAI Project.

We have been progressing well with works on-site. In relation to the educational buildings, much of the work has taken place in the main school building and sports hall, including installation of mechanical, electrical and plumbing (MEP) services. The residential building work is now out of the ground and it will take approximately two-three weeks to complete each floor. In the following weeks, you will continue to see the residential core come up. On the back of this newsletter, you can find some imagery of the progress on-site.

On **Thursday 19 November 2020 at 7pm**, an online public webinar is being held to provide a brief update of the works on-site and provide residents with an opportunity to ask the project team questions. Please visit the project website www.colpai-project.co.uk to register for the webinar.

The works at the COLPAI Project are continuing in strict accordance with guidelines issued by the Government and Public Health England relating to COVID-19. The situation surrounding COVID-19 is ever-changing. Our team is consistently monitoring and following Government guidance and Public Health England advice.

We thank you for your continued cooperation during this time.

Best wishes

COLPAI Project Team

WORKING HOURS

The consented working hours are:

Monday to Friday
8am to 6pm

Saturday
9am to 2pm

The consented reduced impact hours are:

Monday to Friday
10am to 12pm
and 2pm to 4pm

KEY CONTACTS

For site emergencies, please contact:

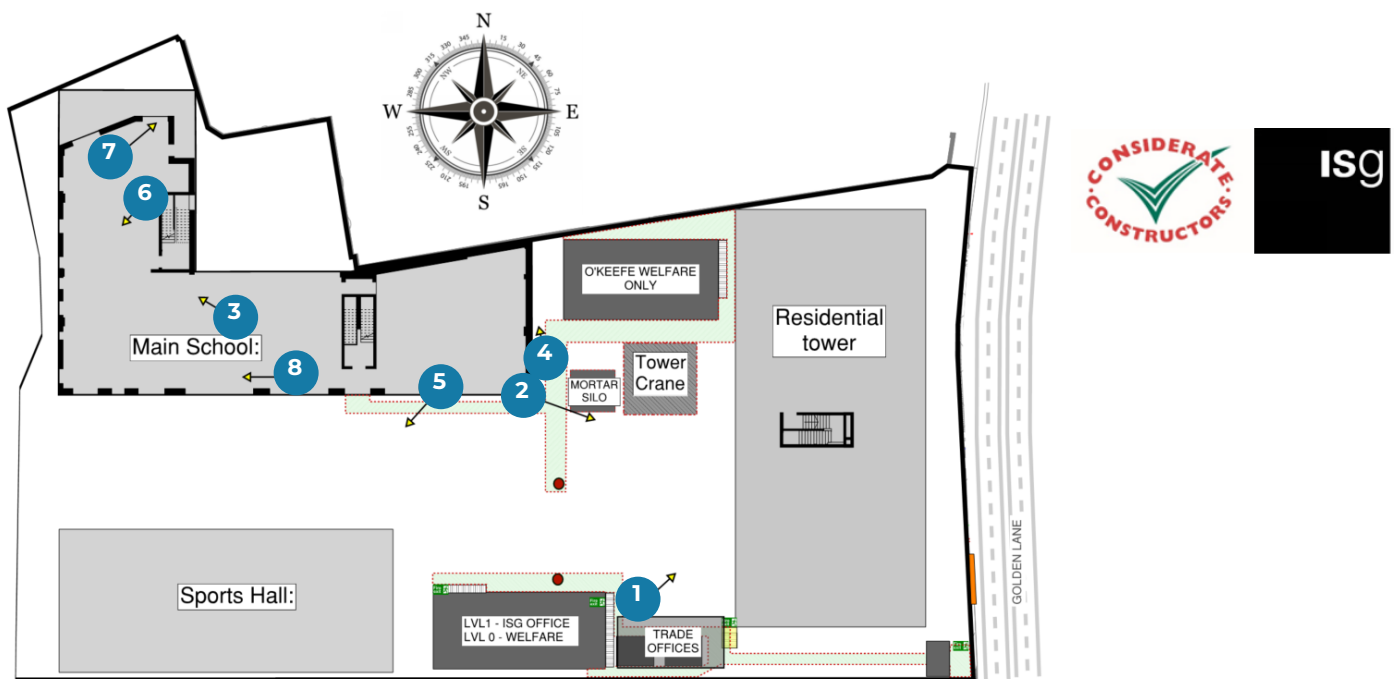
Steven McCarthy, ISG
T: 07825 719 496

For general enquiries, please contact the project team:

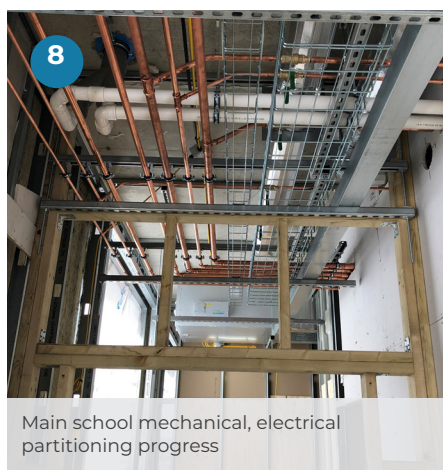
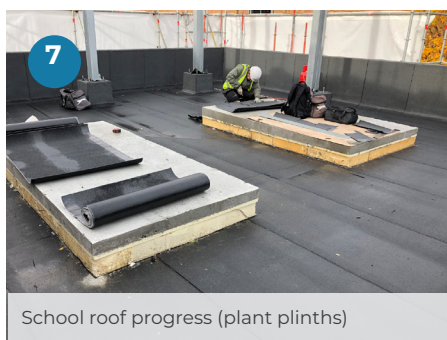
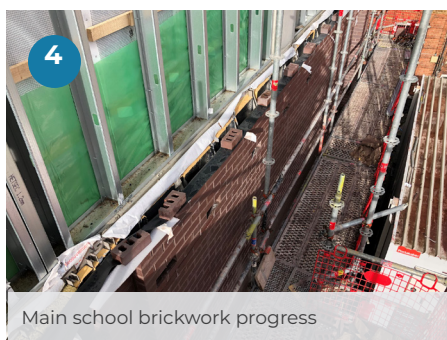
E: info@colpai-project.co.uk
T: 0800 772 0475

For the Department of Community and Children's Services (DCCS), please contact:

Paul Murtagh
T: 0207 332 3015



Map showing the COLPAI Project site



ISLINGTON
In partnership with

