

# COLPAI Project Newsletter

[www.colpai-project.co.uk](http://www.colpai-project.co.uk)

# COLPAI Project



Dear Neighbour

We are writing to update you on the progress on-site at the COLPAI Project.

We have been progressing well with works on-site. The residential building concrete frame is complete to level 14, including the roof parapet and Steel Framing Systems (SFS). We expect this to be completed in the next couple of weeks.

The fit-out of the educational buildings is also progressing well and are on-track for completion in the coming weeks. The City of London Primary Academy Islington will be moving its resources from Copenhagen Primary School to the permanent school site over the weekend of Saturday 17 - Sunday 18 July 2021, ready to open fully at the start of September 2021. The majority of the removals will take place on Saturday 17 July, with remaining deliveries completed on Sunday 18 July, and one delivery on Monday 19 July. You can find more information about landscaping and CCTV at the school, as well as imagery of the progress on-site within this newsletter.

Thank you to those who attended our online public webinar on Thursday 20 May 2021. Copies of all of the materials, including a recording of the webinar, the presentation and notes are available on our project website [www.colpai-project.co.uk](http://www.colpai-project.co.uk) in the 'downloads' section.

## WORKING HOURS

The consented working hours are:

### Monday to Friday

- 8am-6pm
- 6pm-8pm within the educational buildings (quiet works)

### Saturday

- 9am-2pm
- 2pm-4pm within the educational buildings (quiet works)

The consented reduced impact hours are:

### Monday to Friday

10am-12pm and 2pm-4pm

## KEY CONTACTS

For site emergencies, please contact:

**Steven McCarthy, ISG**  
**T: 07825 719 496**

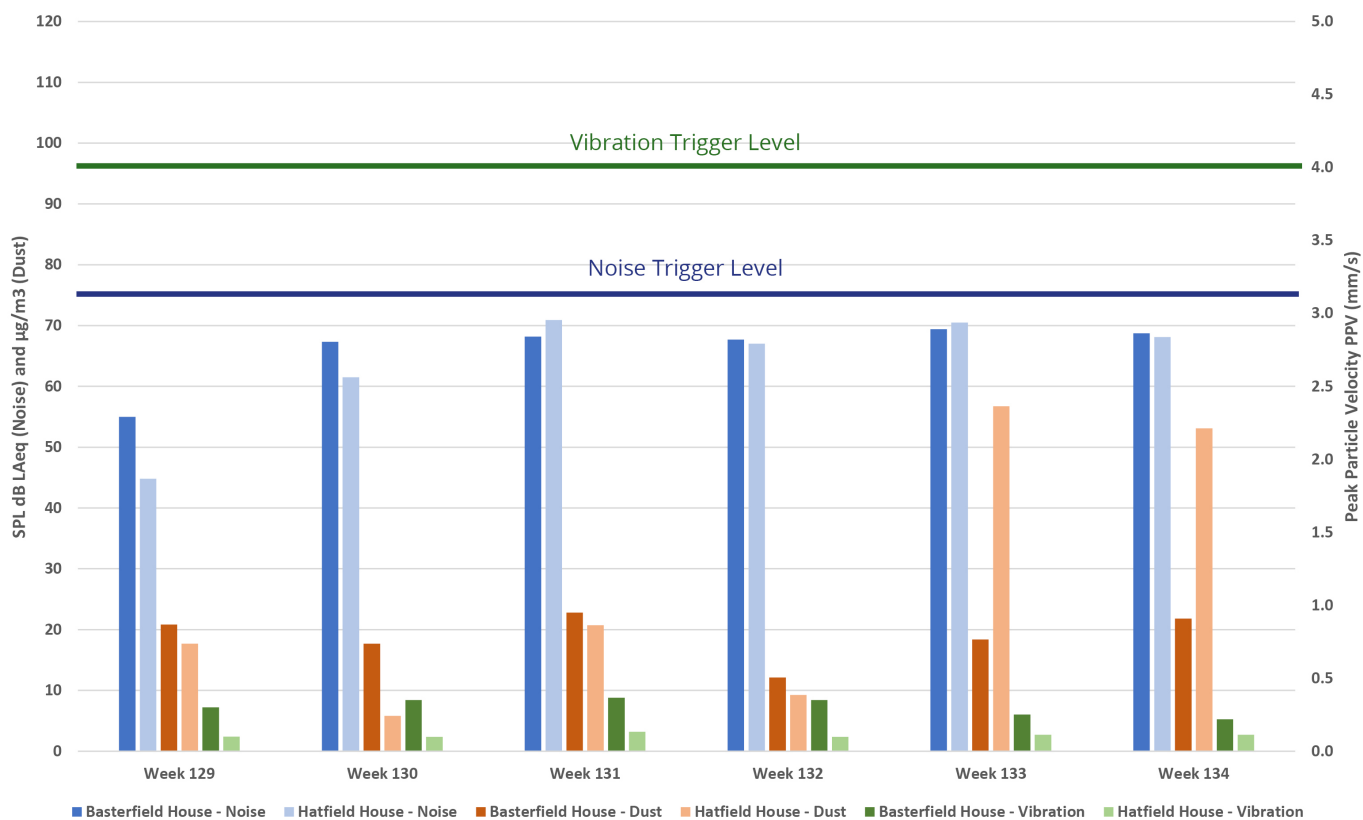
For general enquiries, please contact the project team:

**E: [info@colpai-project.co.uk](mailto:info@colpai-project.co.uk)**  
**T: 0800 772 0475**

For the Department of Community and Children's Services (DCCS), please contact:

**Paul Murtagh**  
**T: 0207 332 3015**

COLPAI - Measured Noise, Vibration and Dust Levels - May 2021  
Site Action Values - 73 dB LAeq 10 hour (Noise) 4 mm/s PPV (Vibration) and 190 µg/m³ (Dust)



## May 2021 Monitoring Results

### COLPAI PROJECT WEBINAR

On **Thursday 15 July 2021 at 7pm**, our next online public webinar is being held to provide an update of the works on-site and provide the local community with an opportunity to ask the project team questions. Please visit the project website [www.colpai-project.co.uk](http://www.colpai-project.co.uk) to register for the webinar.

You can also join the webinar by telephone if it better suits your needs by calling **0203 901 7895**. The webinar ID is **818 7302 3099**.

## **FUTURE WORKS AND PROTOCOLS**

---

### **EDUCATIONAL BUILDINGS - CCTV SURVEILLANCE**

---

The COLPAI Project team would like to reassure residents and stakeholders that the CCTV being installed at the City of London Primary Academy Islington building is for safeguarding the children and the security of the building. The CCTV is legally compliant and will not invade the privacy of residents. Any cameras currently fixed to the face of the school have yet to be commissioned and are therefore not live and /or in their correct positions.

The City of London Academies Trust (CoLAT) has advised that it will work with the school to undertake a Data Privacy Impact Assessment (DPIA) before the system is commissioned and starts processing data. This risk assessment process will be overseen by the Trust's Data Protection Officer (DPO) to ensure compliance with data protection law and the surveillance code of practice.

The CCTV system will be used only for legitimate purposes. CoLAT and the school will take all necessary steps to ensure the system does not interfere with the rights and freedoms of individuals and the privacy interests of City of London Primary Academy Islington neighbours.

### **LANDSCAPING**

---

New hard and soft landscaping is being provided on-site in accordance with the agreed landscape plans, which formed part of the planning approval. The plans are available to view on our project website in the 'downloads' section.

Landscaping by the boundary wall with the allotments will include a number of tree species, in addition to woodland low-level planting and a number of shrubs, including Ilex.

The landscaping at the boundary wall with Basterfield Mews will comprise a mix of new planting, in addition to a wire trellis system and climbers to the school hall facade.

### **HOARDING**

---

As residents will be aware, in preparation for the handover of the school, the hoarding on-site has been reconfigured and in some locations has already been replaced with heras fencing. In advance of the school taking occupation, the remaining hoarding that faces towards the school is also due to be refreshed and painted a different colour at the request of the school.

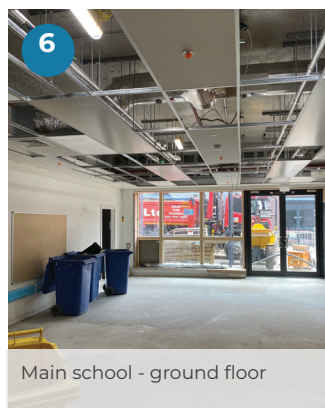
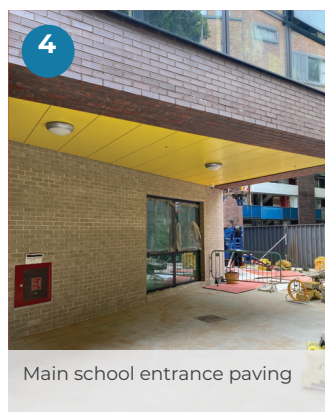
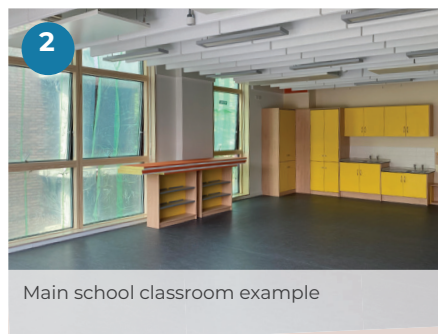
The works at the COLPAI Project are continuing in strict accordance with guidelines issued by the Government and Public Health England relating to COVID-19. ISG is progressing with works on-site and is working tirelessly to ensure the site operations go above and beyond the Government guidelines issued for construction sites. All contractors are aware of the standards they must uphold, and these are revisited daily at on-site briefings.

Best wishes  
**COLPAI Project Team**





Site plan showing the COLPAI Project site in red with the key areas highlighted.



ISLINGTON  
In partnership with

